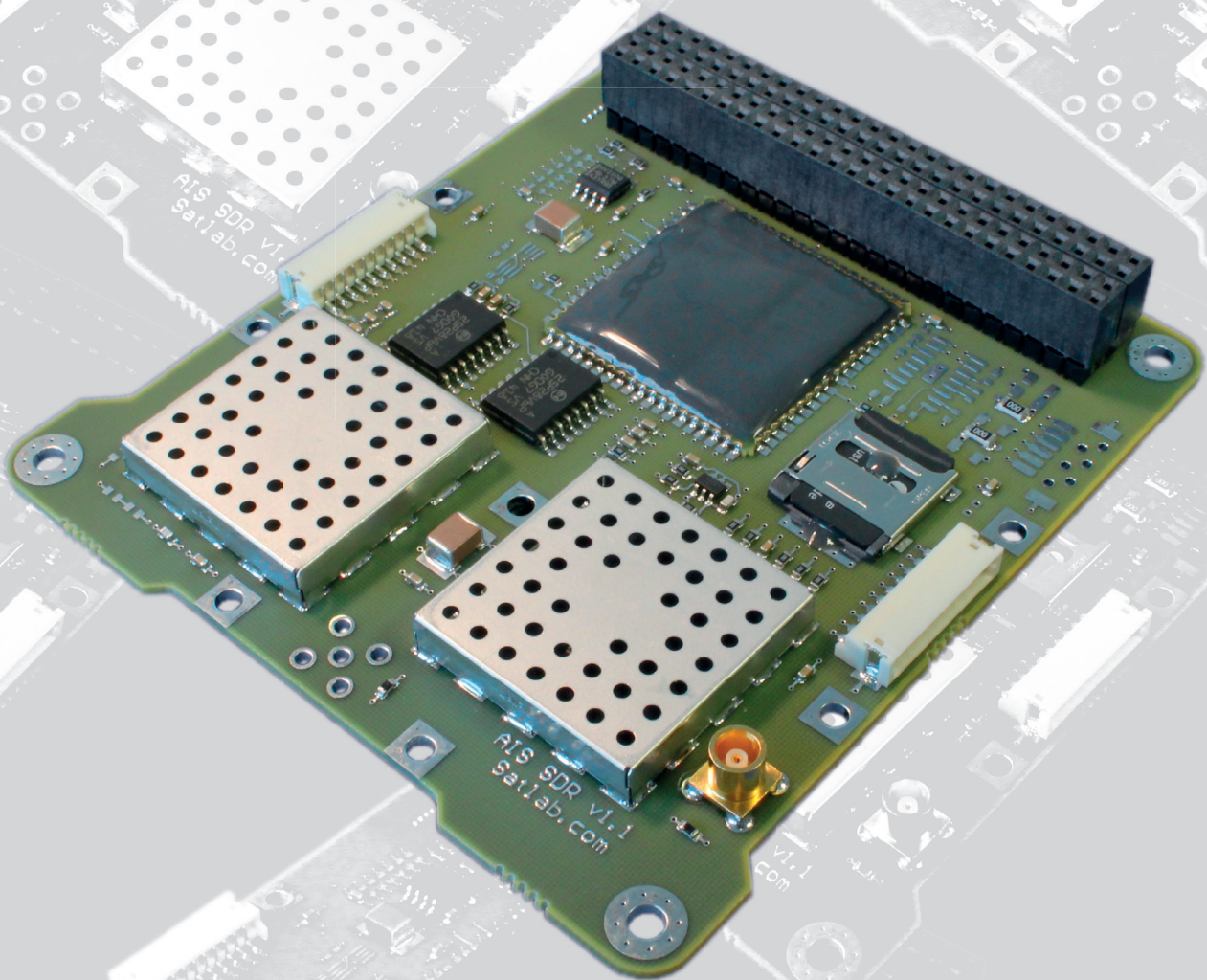


Satlab QubeAIS Receiver



Satlab QubeAIS Receiver

Software-Defined AIS Receiver for CubeSats

- Flight heritage from multiple CubeSat and microsatellite missions
- Completely stand alone operation with onboard storage
- Easy integration with CubeSat Space Protocol

Highlighted Technical Features

Board Features:

- Software configurable for 162 MHz channels or 156.8 MHz long-range channels
- Support for raw spectrum sampling
- On-board data storage via SECEDED SD-card (primary) and NOR-flash (secondary) storage
- Linux based DSP platform
- Plugin demodulator SDK available for custom development
- On-orbit software upgradeable

RF Features:

- LNA and SAW filters onboard
- MCX or SMA antenna connector options

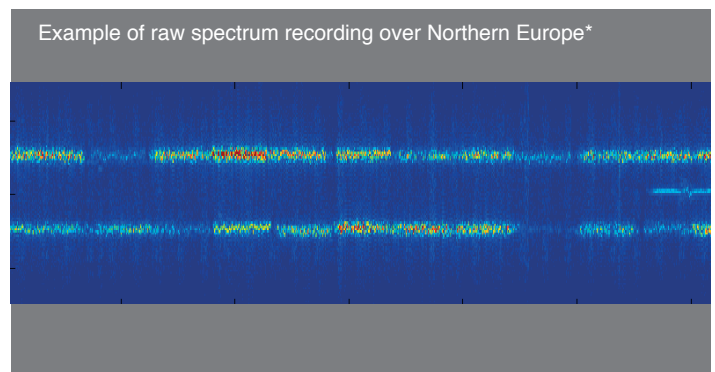
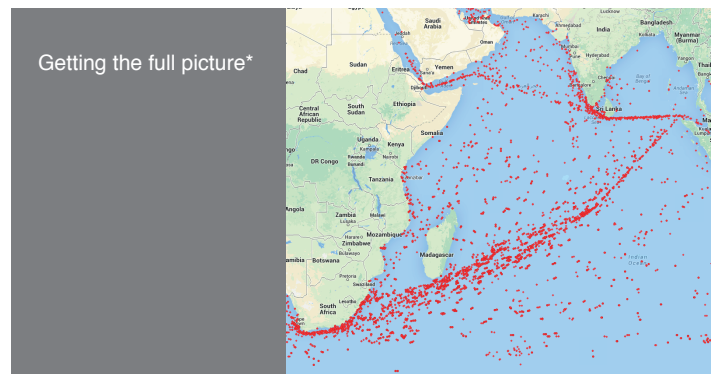
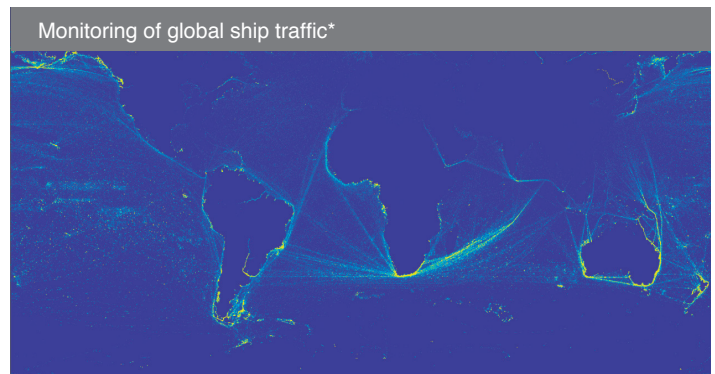
Interfaces:

- CubeSat Space Protocol (CSP) compatible over CAN or UART
- Delivered with client software library for easy integration

Mechanical Features:

- PC/104 form factor
- Weight: 55 g
- Average power Consumption: <1W

The QubeAis is a Satlab ApS product, which is sold and marketed through GomSpace ApS



* Images courtesy of Aalborg University, AAUSAT3 team