

# Z-face overall dimensions

## Kill switch

In released position.  
Pushed into the rail  
when the satellite is  
in the deployer.

DETAIL A  
SCALE 1 : 1

DETAIL B  
SCALE 1 : 1

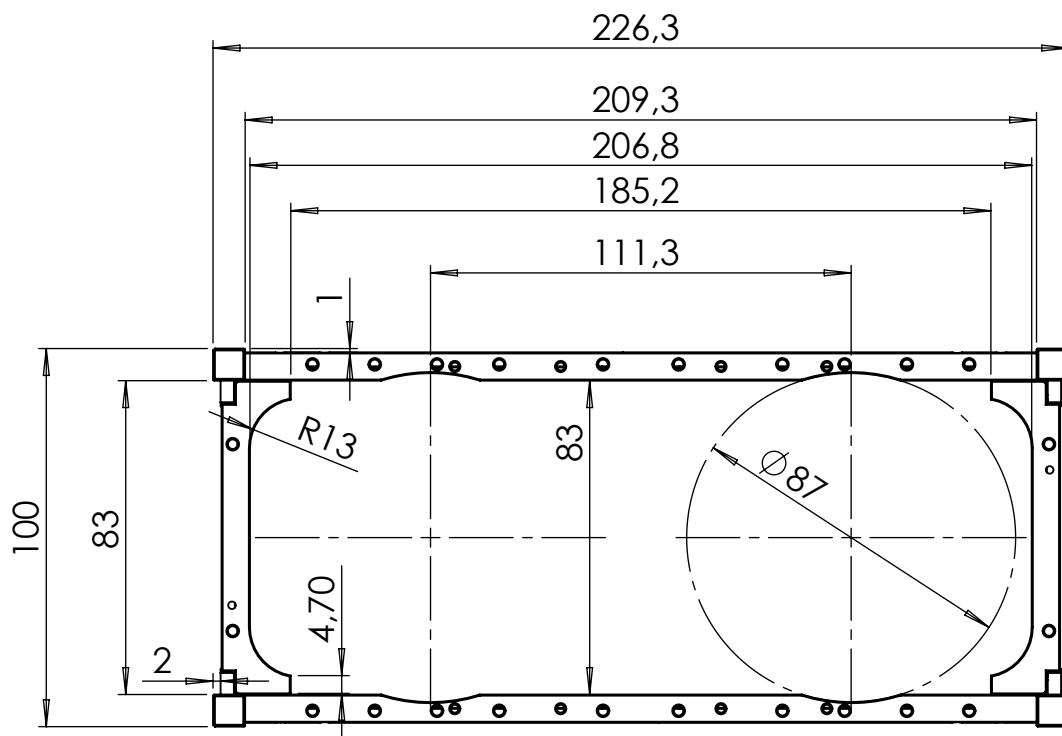
X face

-Z face

Y face

+Z face

Scale: 1:10



+Z face

**GOMSPACE**

UNLESS OTHERWISE SPECIFIED:

Units of dimensions:

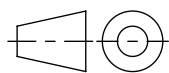
mm

Tolerance:

ISO 2768-fH

Surface roughness:

N/A



Format

A4

Scale

1:2

Part Description:

NanoStructure 6U

Material:

Surface treatment:

N/A

Notes:

UNLESS OTHERWISE SPECIFIED: Screws should be tightened and secured according to IFS doc.: 1013877, Table 2-1

QC by / date (dd-mm-yyyy):

N / A

Verified by / date (dd-mm-yyyy):

sbje / 06-05-2024

Created by / date (dd-mm-yyyy):

msg / 06-05-2024

Document status:

Released

Part Number

107861

Doc. Rev.

2.0

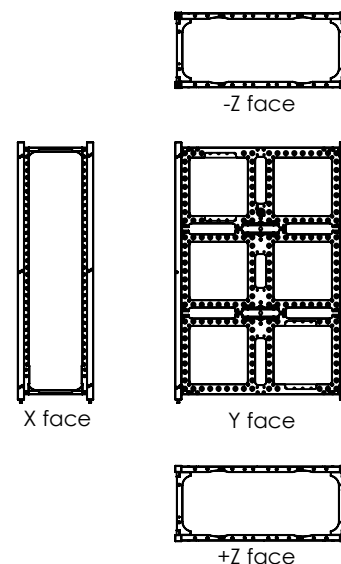
Sheet

1/6

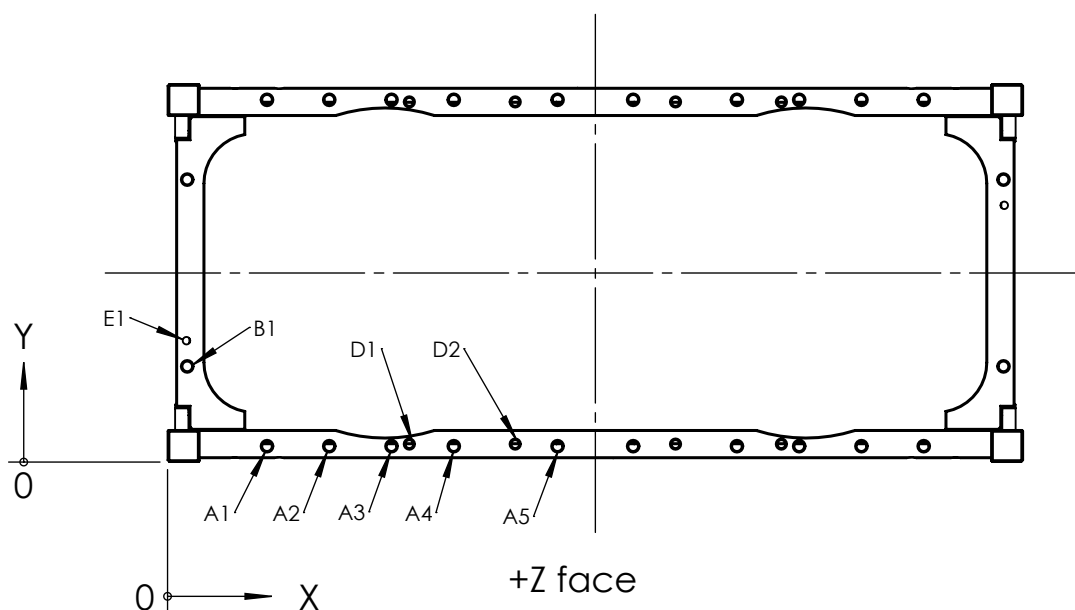
This drawing is the property of GOMSpace A/S, no reproduction or access to third party is allowed without written permission

# Z-face hole callouts

Hole Table			
TAG	X LOC	Y LOC	SIZE
A1	26,3	4,20	M2.5x0.45 SCREWLOCK HELICOIL Insert = 1.5 * Dia. Do NOT apply Loctite or similar
A2	42,8	4,20	
A3	59,2	4,20	
A4	75,7	4,20	
A5	103,2	4,20	
B1	5,2	25,30	M2.5x0.45 SCREWLOCK HELICOIL Insert = 1.5 * Dia. Do NOT apply Loctite or similar
D1	64	4,75	M2x0.4 SCREWLOCK HELICOIL Insert = 2.0 * Dia. Do NOT apply Loctite or similar
D2	92	4,75	M2x0.4 SCREWLOCK HELICOIL Insert = 2.0 * Dia. Do NOT apply Loctite or similar
E1	5	32,10	$\phi$ 2 Note: Skew-symetric around only one of the symetry lines



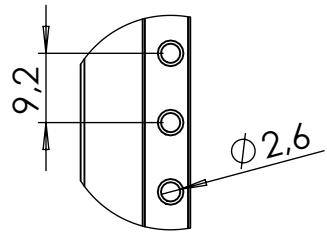
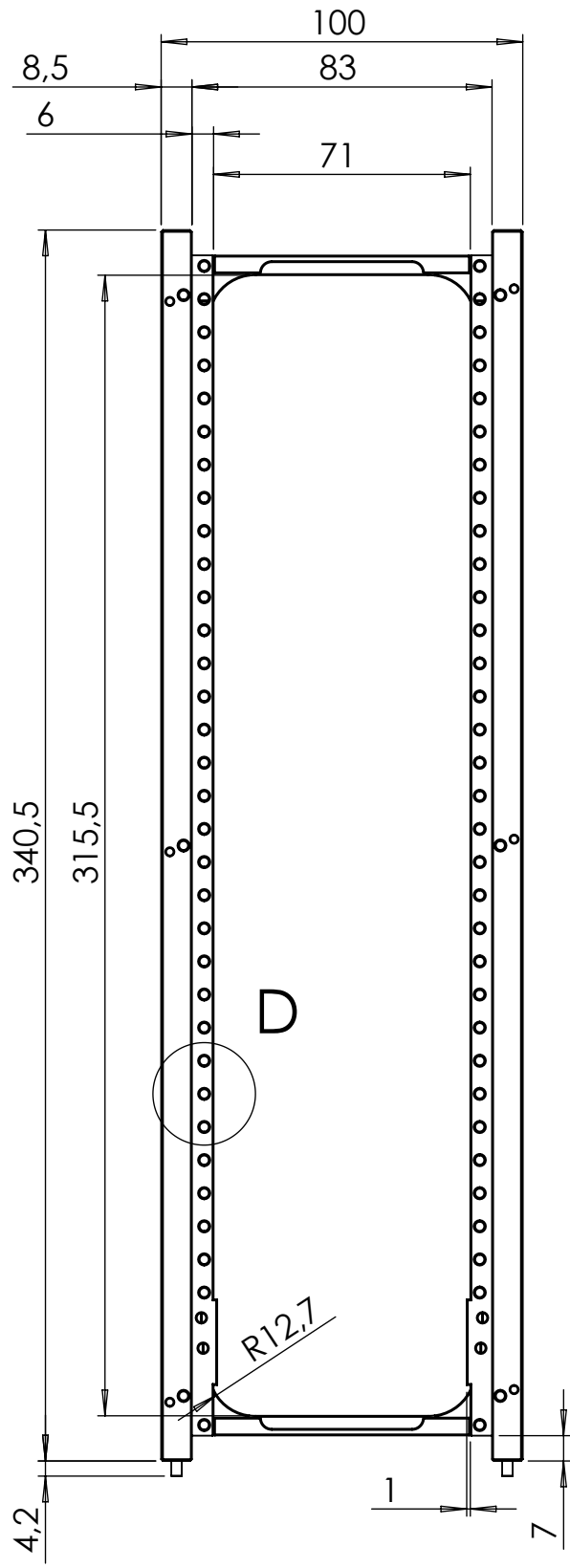
Scale: 1:10



This drawing is the property of GOMSpace A/S, no reproduction or access to third party is allowed without written permission


		Part Description:	QC by / date (dd-mm-yyyy):	
		NanoStructure 6U	N / A	
UNLESS OTHERWISE SPECIFIED:		Material:	Verified by / date (dd-mm-yyyy):	
Units of dimensions:			sbje / 06-05-2024	
Tolerance:		Surface treatment:	Created by / date (dd-mm-yyyy):	
ISO 2768-fH		N/A	msg / 06-05-2024	
Surface roughness:		Notes:	Document status:	
N/A		UNLESS OTHERWISE SPECIFIED: Screws should be tightened and secured according to IFS doc.: 1013877, Table 2-1	Released	
Format	Scale	Part Number	Doc. Rev.	Sheet
A4	1:2	107861	2.0	2/6

# X-face Overall Dimensions

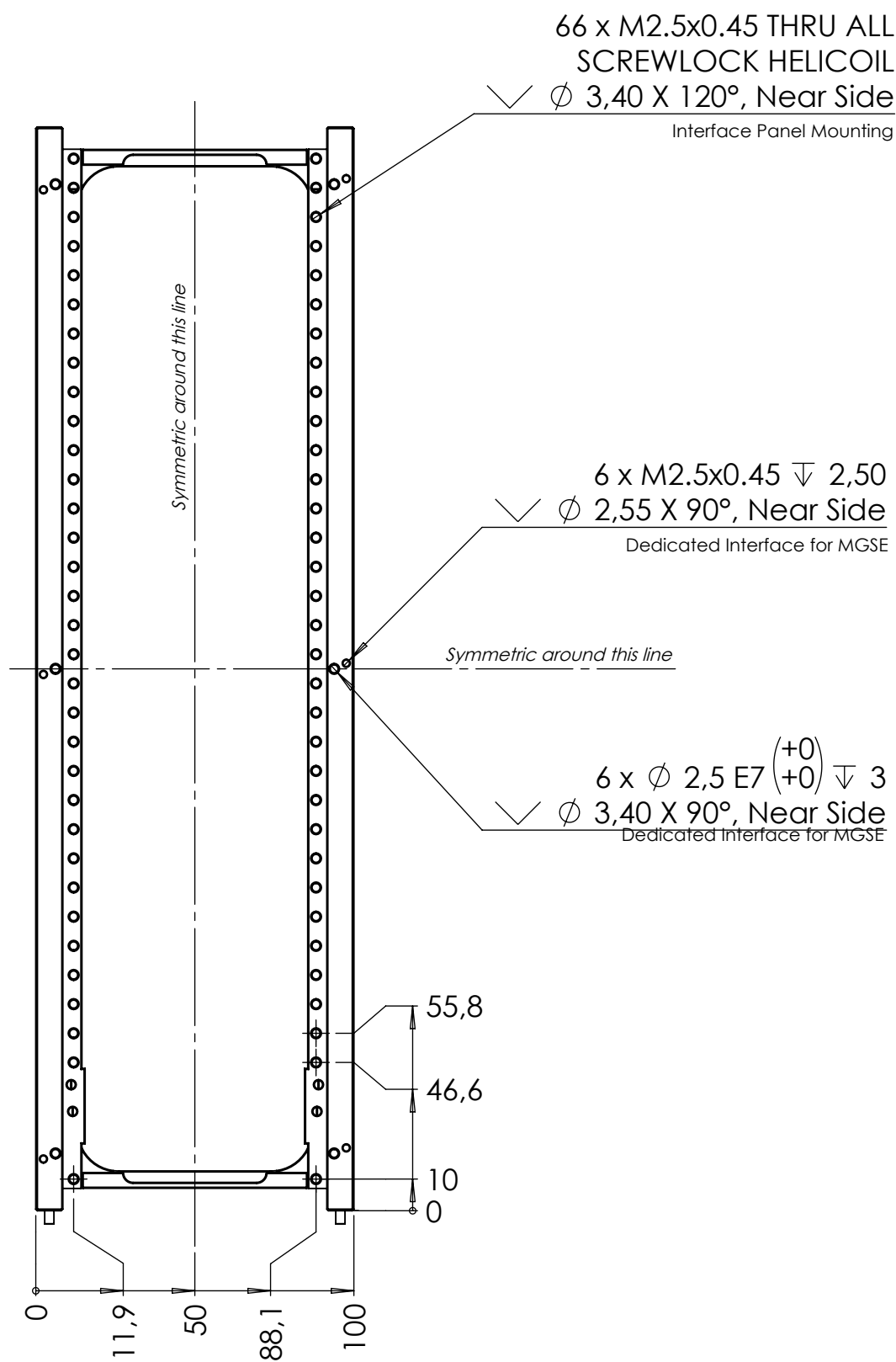


Wall Intergration  
View - D  
SCALE 1 : 1

This drawing is the property of GOMSpace A/S, no reproduction or access to third party is allowed without written permission

<div></div>		Part Description: NanoStructure 6U		QC by / date (dd-mm-yyyy): N / A	
		Material:		Verified by / date (dd-mm-yyyy): sbje / 06-05-2024	
<div>UNLESS OTHERWISE SPECIFIED: Units of dimensions: mm</div>		Surface treatment: N/A		Created by / date (dd-mm-yyyy): msg / 06-05-2024	
<div>Tolerance: ISO 2768-fH</div>		<div>Notes: UNLESS OTHERWISE SPECIFIED: Screws should be tightened and secured according to IFS doc.: 1013877, Table 2-1</div>		Document status: Released	
<div>Surface roughness: N/A</div>				Part Number 107861	Doc. Rev. 2.0
<div>Format A4</div>		<div>Scale 1:2</div>			

# X-face Hole Callouts



This drawing is the property of GOMSpace A/S, no reproduction or access to third party is allowed without written permission

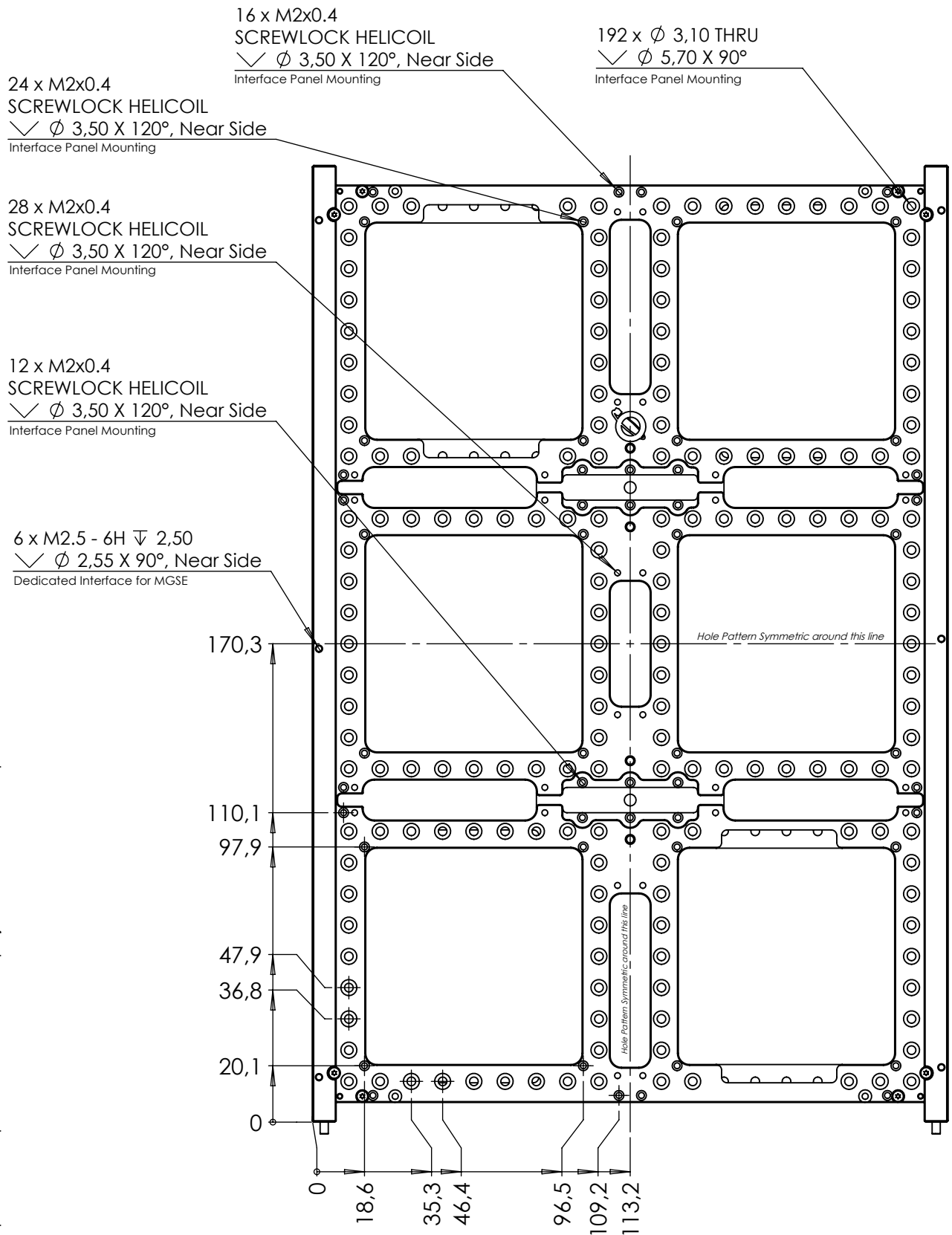
		Part Description: NanoStructure 6U	QC by / date (dd-mm-yyyy): N / A		
		Material:	Verified by / date (dd-mm-yyyy): sbje / 06-05-2024		
<u>UNLESS OTHERWISE SPECIFIED:</u> Units of dimensions: mm  Tolerance: ISO 2768-fH  Surface roughness: N/A		Surface treatment: N/A	Created by / date (dd-mm-yyyy): msg / 06-05-2024		
		Notes: UNLESS OTHERWISE SPECIFIED: Screws should be tightened and secured according to IFS doc.: 1013877, Table 2-1	Document status: Released		
Format A4	Scale 1:2		Part Number 107861	Doc. Rev. 2.0	Sheet 4/6

**This drawing is the property of GomSpace A/S, no reproduction or access to third party is allowed without written permission**



5/6

# Y-face Hole Callouts



This drawing is the property of GOMSpace A/S, no reproduction or access to third party is allowed without written permission

**GOMSPACE**

UNLESS OTHERWISE SPECIFIED:

Units of dimensions:

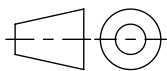
mm

Tolerance:

ISO 2768-fH

Surface roughness:

N/A



Format

A4

Scale

1:2

Part Description:

NanoStructure 6U

Material:

Surface treatment:

N/A

Notes:

UNLESS OTHERWISE SPECIFIED: Screws should be tightened and secured according to IFS doc.: 1013877, Table 2-1

QC by / date (dd-mm-yyyy):

N / A

Verified by / date (dd-mm-yyyy):

sbje / 06-05-2024

Created by / date (dd-mm-yyyy):

msg / 06-05-2024

Document status:

Released

Part Number

107861

Doc. Rev.

2.0

Sheet

6/6