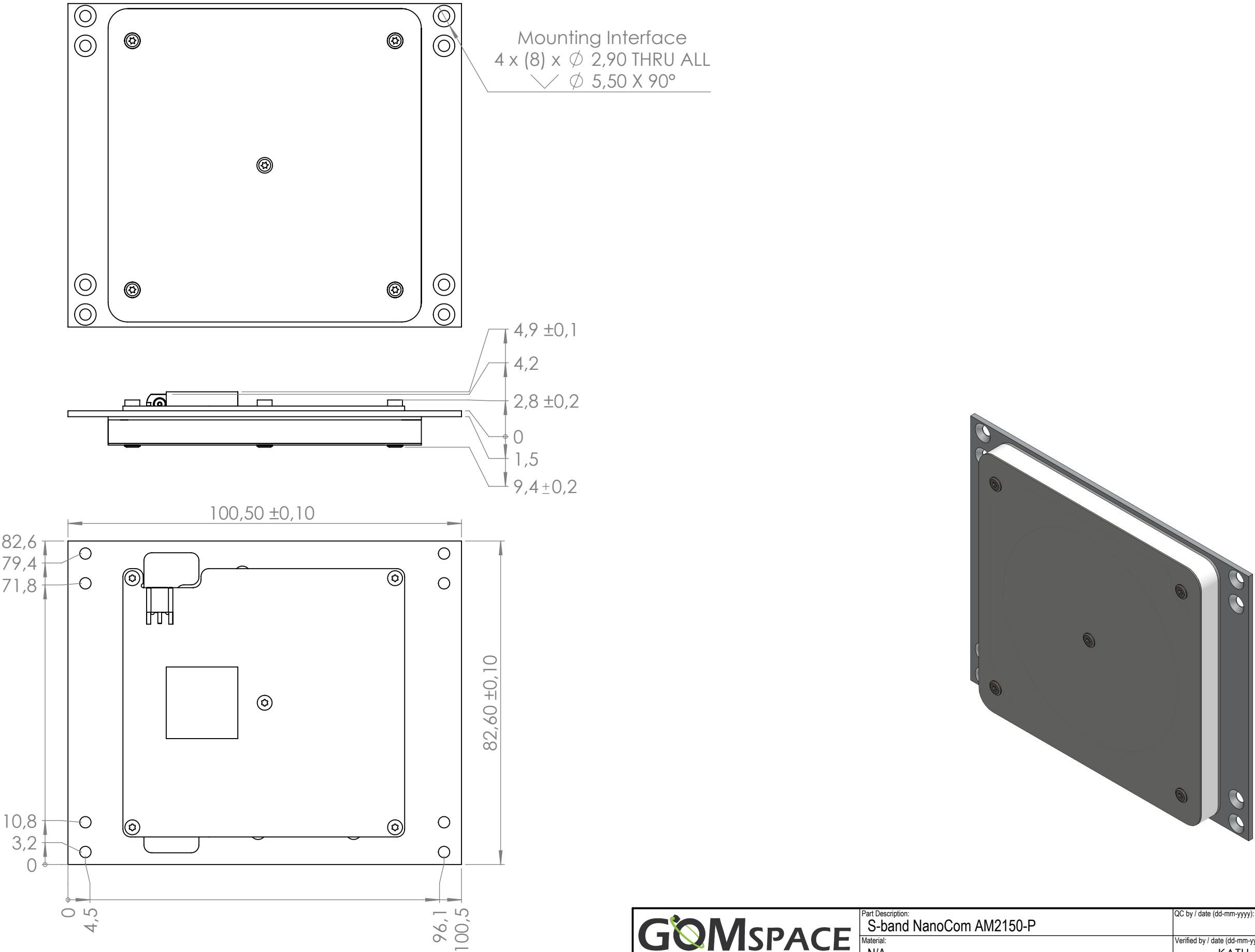
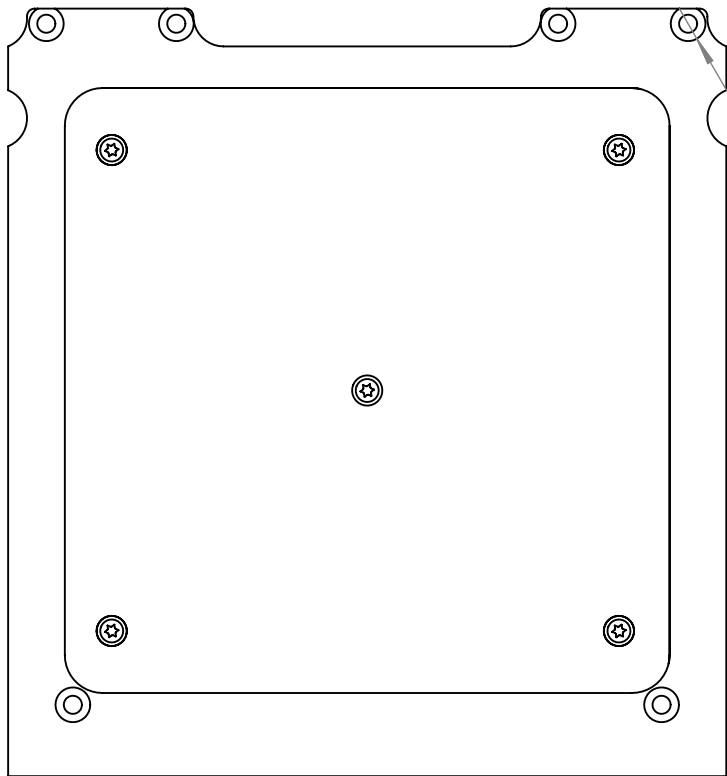


AM2150P Type A

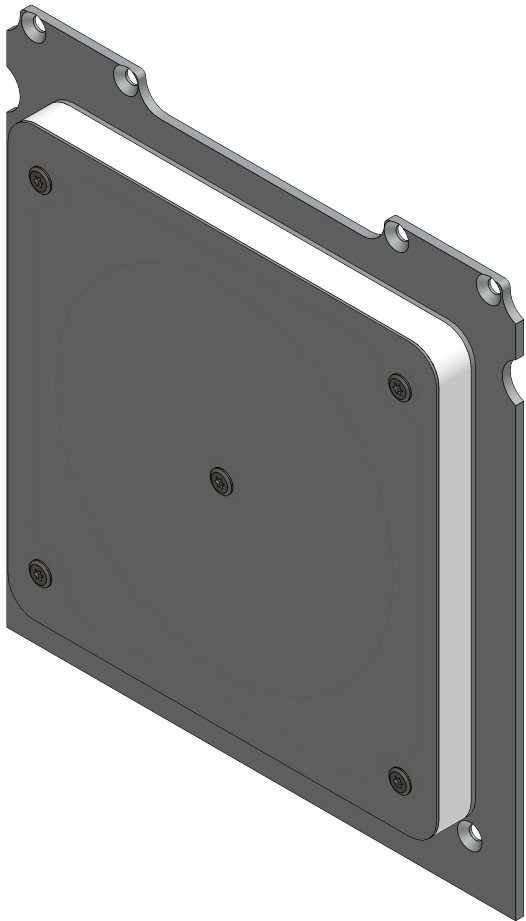
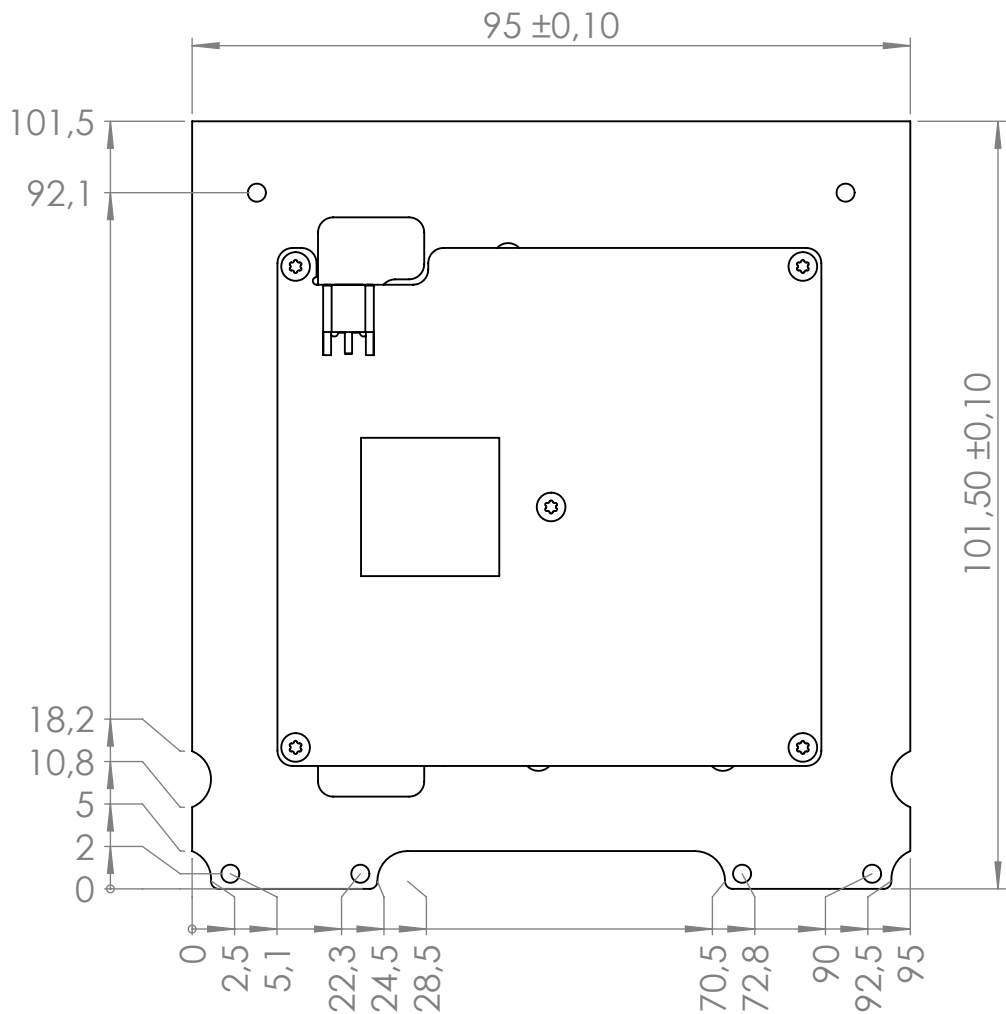
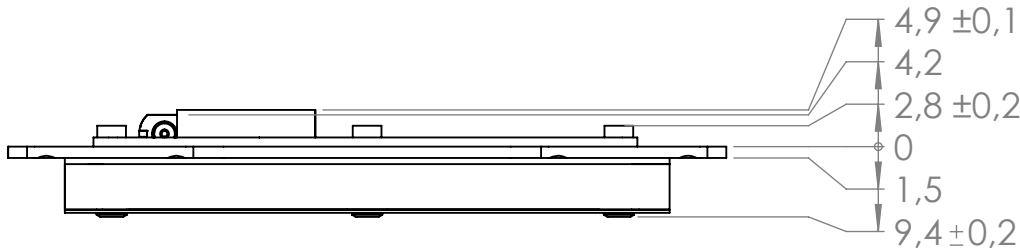


| | | |
|---|--|--|
| <div><div><div><div><div><div></div><div>GOMSPACE</div></div></div><div><div><div>UNLESS OTHERWISE SPECIFIED:</div><div>Units of dimensions: mm</div><div>Tolerance: fine</div><div>Surface roughness:</div></div><div><div><div><div></div><div></div></div></div><div><div>Format A3</div><div>Scale 1:1</div></div></div></div></div></div></div> | Part Description: S-band NanoCom AM2150-P | QC by / date (dd-mm-yyyy): - / - |
| | Material: N/A | Verified by / date (dd-mm-yyyy): KATU / 30/09/2025 |
| | Surface treatment: N/A | Created by / date (dd-mm-yyyy): jfap / 05-12-2022 |
| | Notes: UNLESS OTHERWISE SPECIFIED: Screws should be tightened and secured according to IFS doc.: 1022205, Table 2-1 | Document status: Released |
| | Part Number 108335 | Doc. Rev. 3.0 |
| | | Sheet 1/4 |

AM2150P Type B

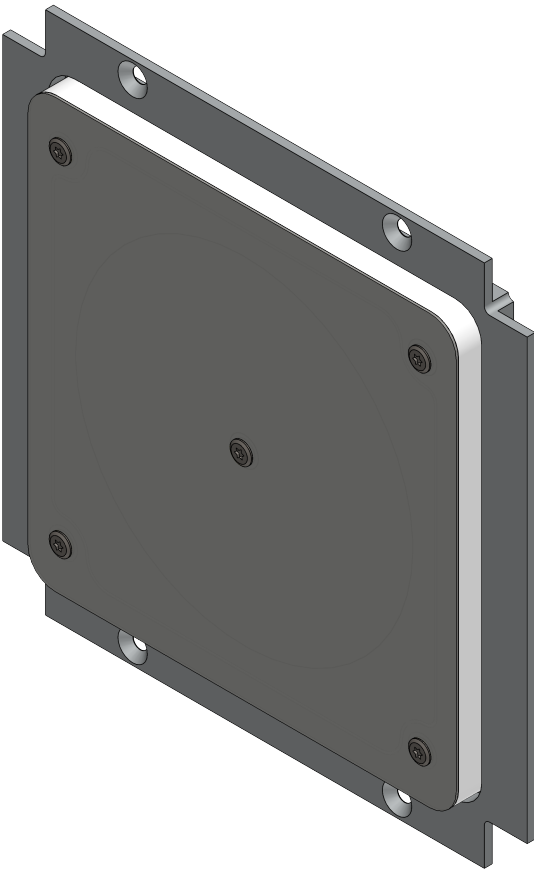
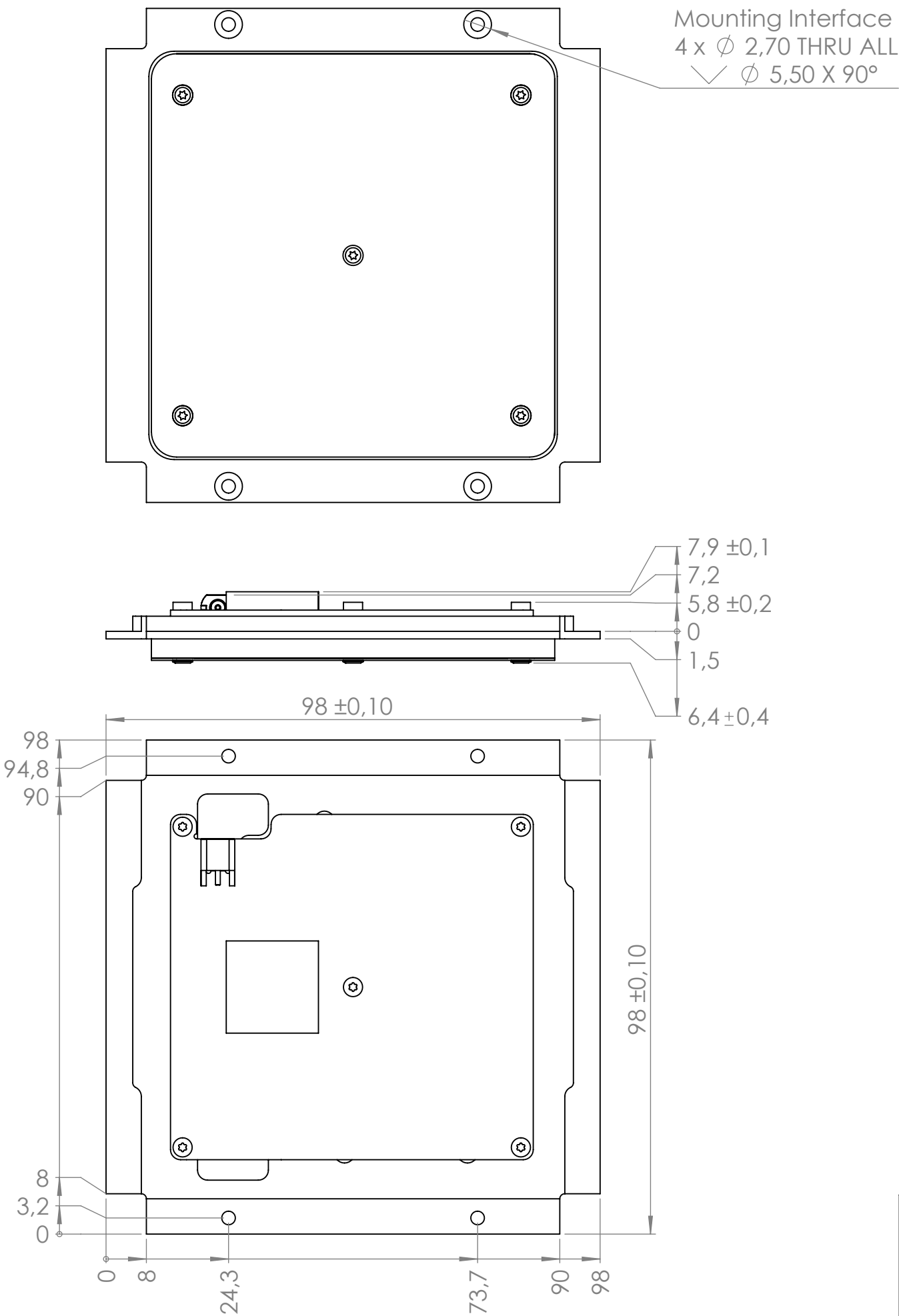


Mounting Interface
4 x (6) x \varnothing 2,40 THRU ALL
 \surd \varnothing 4,60 X 90°



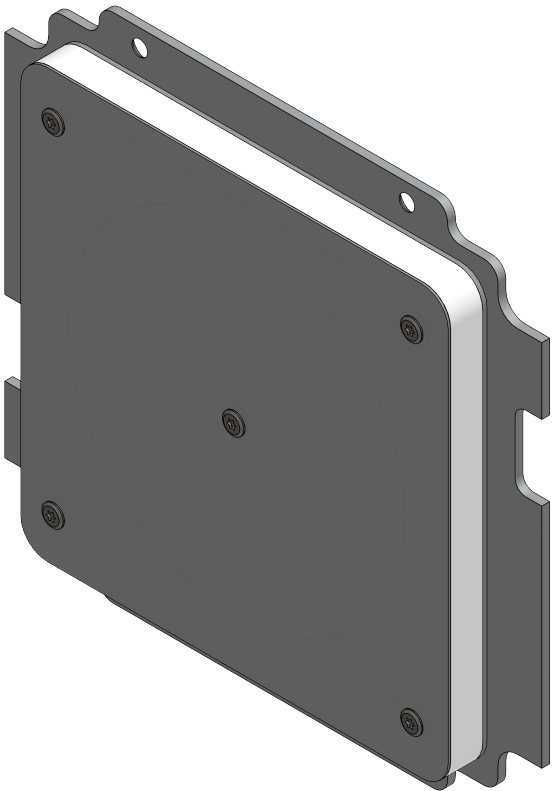
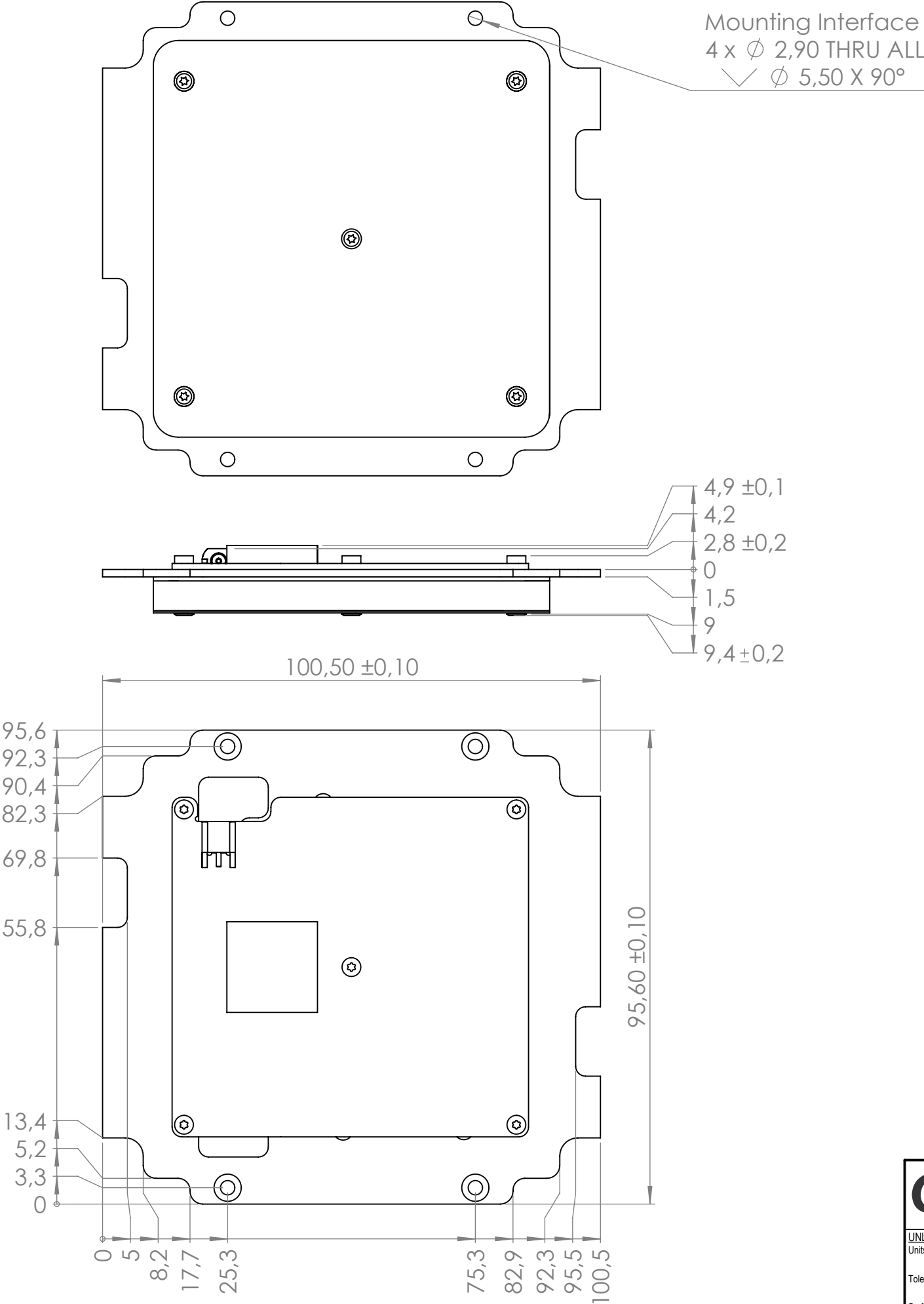
| | | | |
|--|--|---|--|
| GOMSPACE <small>UNLESS OTHERWISE SPECIFIED: Units of dimensions: mm Tolerance: fine Surface roughness:</small> | | Part Description: S-band NanoCom AM2150-P | QC by / date (dd-mm-yyyy): - / - |
| | | Material: N/A | Verified by / date (dd-mm-yyyy): KATU / 30/09/2025 |
| Format A3 | | Surface treatment: N/A | Created by / date (dd-mm-yyyy): jfap / 05-12-2022 |
| | | Notes: UNLESS OTHERWISE SPECIFIED: Screws should be tightened and secured according to IFS doc.: 1022205, Table 2-1 | Document status: Released |
| | | Part Number 108335 | Doc. Rev. 3.0 |
| | | Scale 1:1 | Sheet 2/4 |

AM2150P Type C



| | | | | |
|--|--|--------------|---|----------------------------|
| <div><div><div><div><div><div></div></div></div><div><div><div></div></div></div><div><div><div></div></div></div></div></div><div>GOMSPACE</div><div>UNLESS OTHERWISE SPECIFIED: Units of dimensions: mm Tolerance: fine Surface roughness:</div></div> | Part Description: S-band NanoCom AM2150-P | | QC by / date (dd-mm-yyyy): - / - | |
| | Material: N/A | | Verified by / date (dd-mm-yyyy): KATU / 30/09/2025 | |
| | Surface treatment: N/A | | Created by / date (dd-mm-yyyy): jfap / 05-12-2022 | |
| | Notes: UNLESS OTHERWISE SPECIFIED: Screws should be tightened and secured according to IFS doc.: 1022205, Table 2-1 | | Document status: Released | |
| | Format A3 | Scale 1:1 | Part Number 108335 | Doc. Rev. Sheet 3.0 3/4 |

AM2150P Type D



This drawing is the property of GomSpace A/S, no reproduction or access to third party is allowed without written permission

C:\PDM\GomSpace\Internal Component Library\NanoCom\ANT2150\ANT2150-Assembly_2150assem-2@Passive (TMTC) - P - Low Backplate_X(Type A)

| | | | | |
|---|--|--------------|---|------------------|
| <div><div><div><div><div><div></div><div>GOM</div></div><div><div><div></div><div>SPACE</div></div></div></div><div><div>UNLESS OTHERWISE SPECIFIED:</div><div>Units of dimensions: mm</div><div>Tolerance: fine</div><div>Surface roughness:</div></div></div></div></div> | Part Description: S-band NanoCom AM2150-P | | QC by / date (dd-mm-yyyy): - / - | |
| | Material: N/A | | Verified by / date (dd-mm-yyyy): KATU / 30/09/2025 | |
| | Surface treatment: N/A | | Created by / date (dd-mm-yyyy): jfap / 05-12-2022 | |
| | Notes: UNLESS OTHERWISE SPECIFIED: Screws should be tightened and secured according to IFS doc.: 1022205, Table 2-1 | | Document status: Released | |
| | Format A3 | Scale 1:1 | Part Number 108335 | Doc. Rev. 3.0 |
| | | | Sheet 4/4 | |