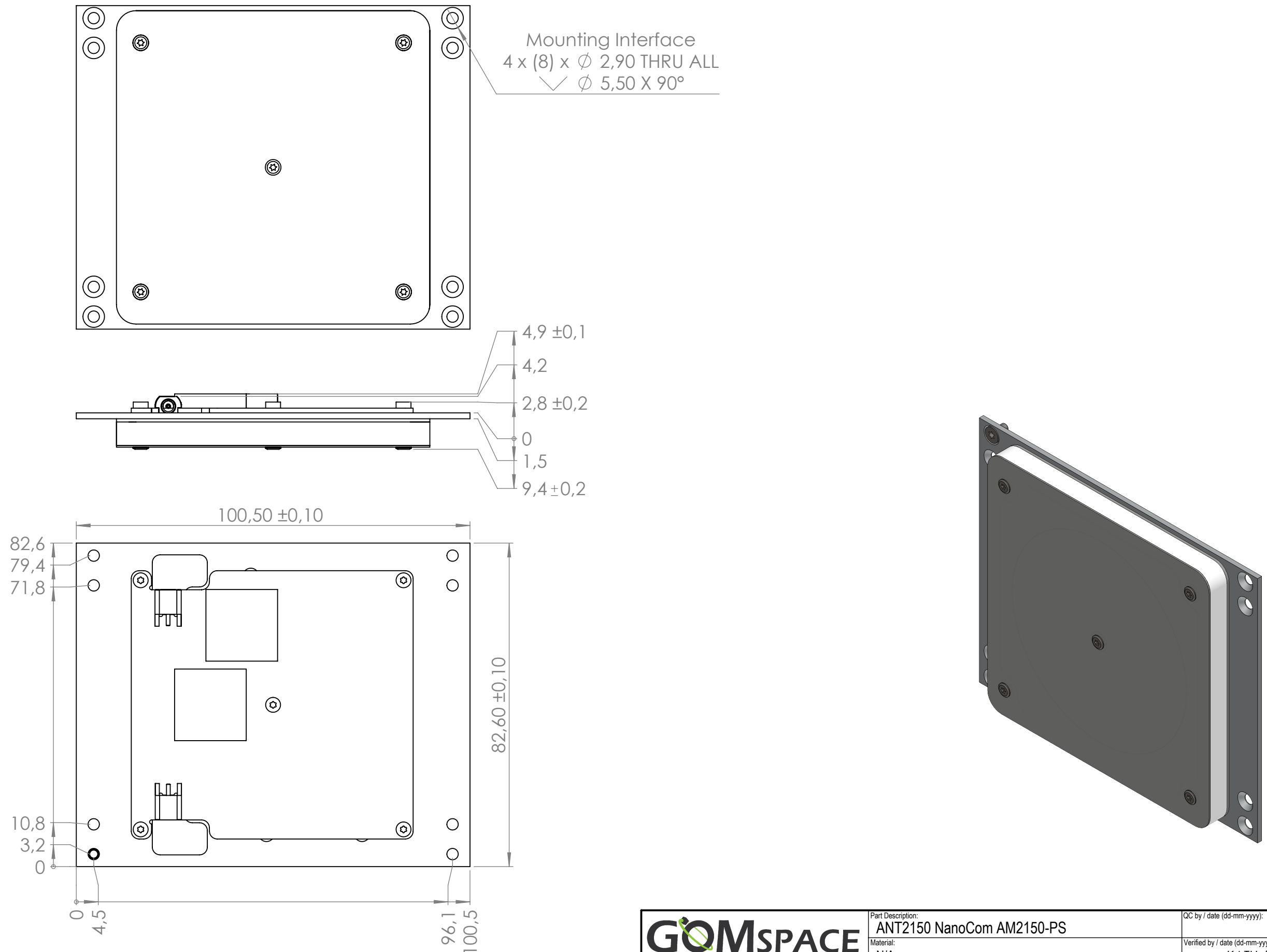

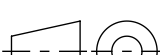
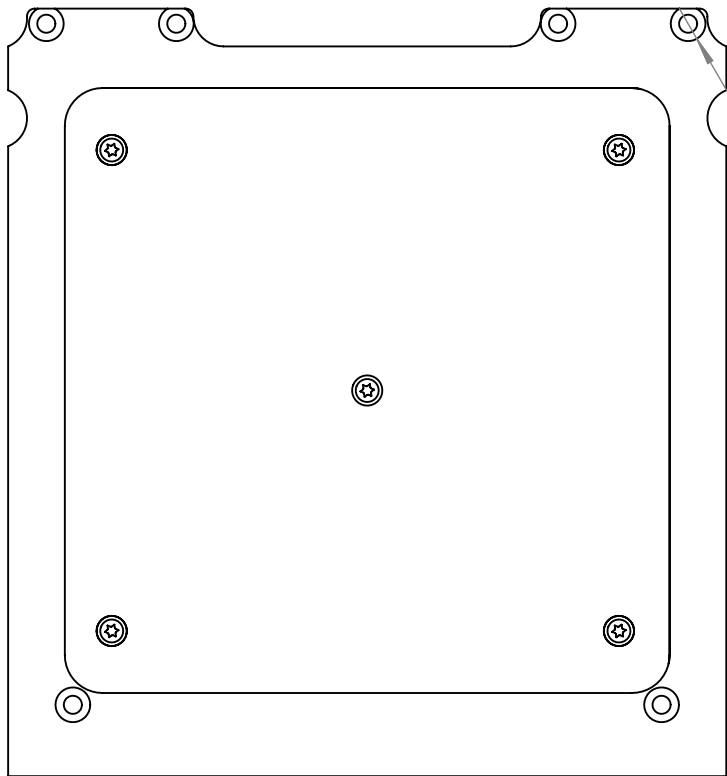


AM2150PS Type A

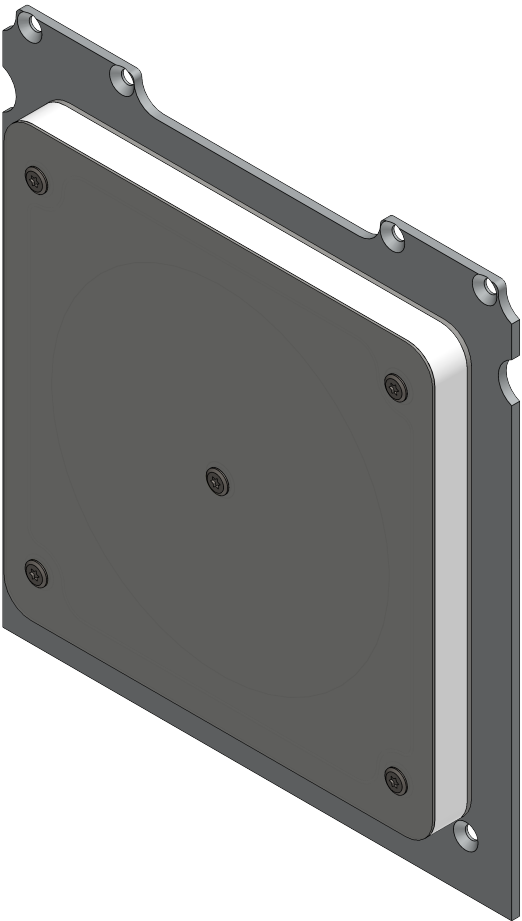
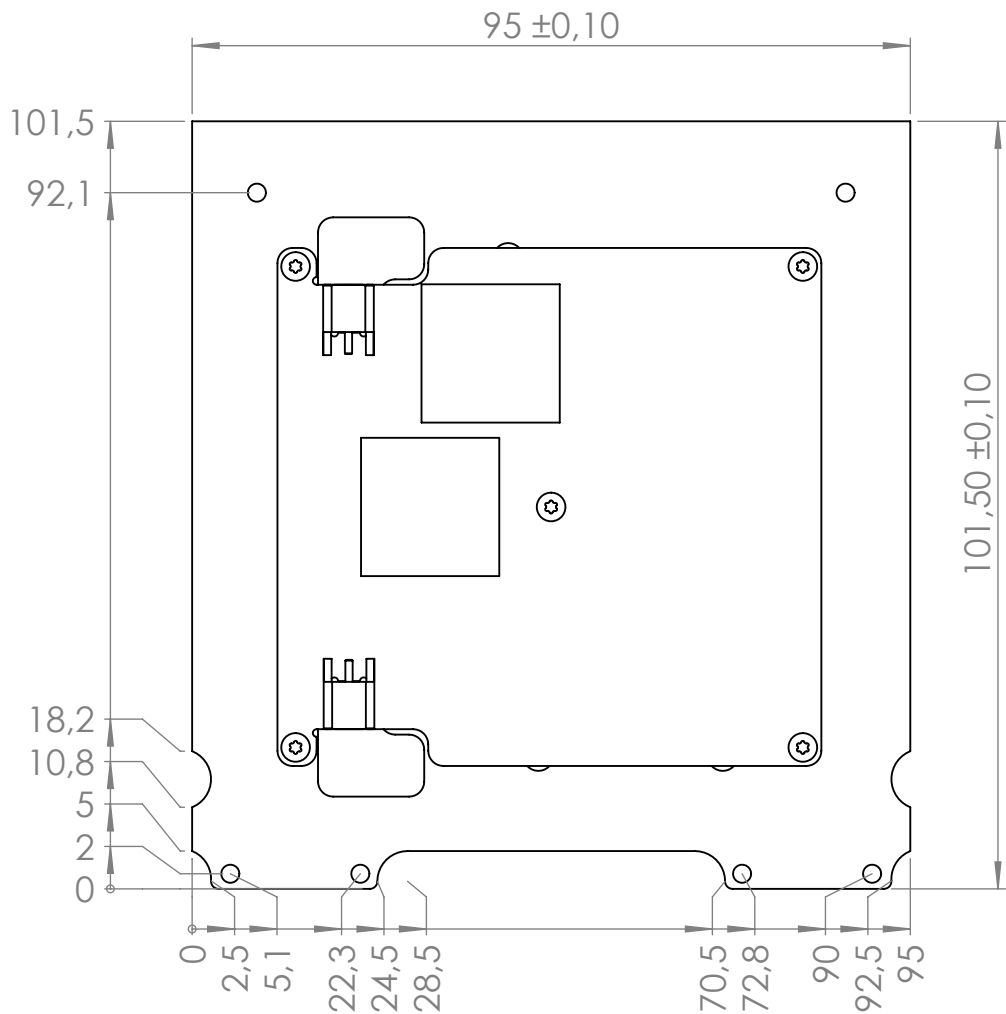
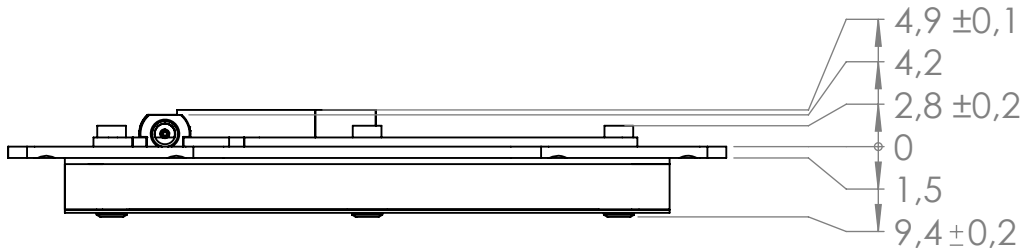


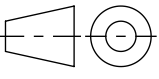
		Part Description:		QC by / date (dd-mm-yyyy):	
		ANT2150 NanoCom AM2150-PS		- / -	
UNLESS OTHERWISE SPECIFIED: Units of dimensions: mm Tolerance: fine Surface roughness:		Material:		Verified by / date (dd-mm-yyyy):	
		N/A		KATU / 30/09/2025	
		Surface treatment:		Created by / date (dd-mm-yyyy):	
		N/A		jfap / 05-12-2022	
Format A3		Scale 1:1		Notes:	
				UNLESS OTHERWISE SPECIFIED: Screws should be tightened and secured according to IFS doc.: 1022205, Table 2-1	
Surface roughness:				Document status:	
				Released	
		Part Number		Doc. Rev.	Sheet
		108482		3.0	1/4

AM2150PS Type B

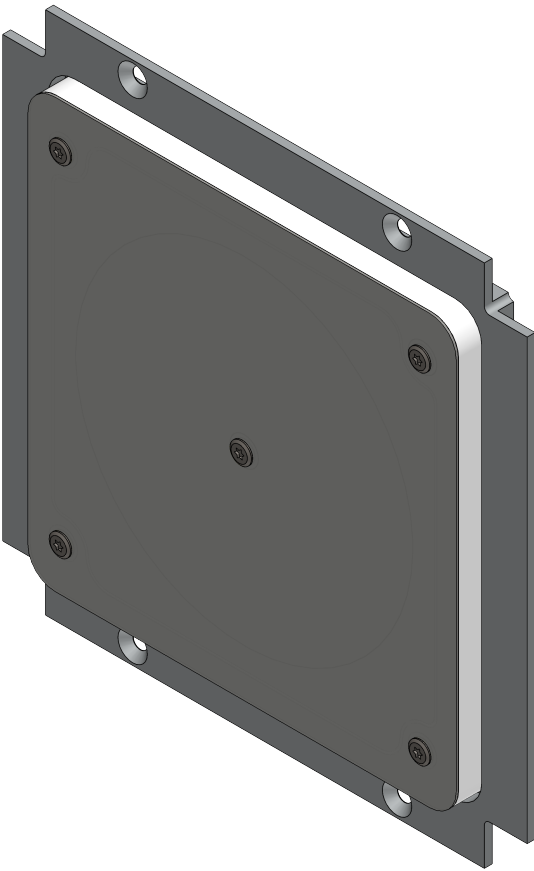
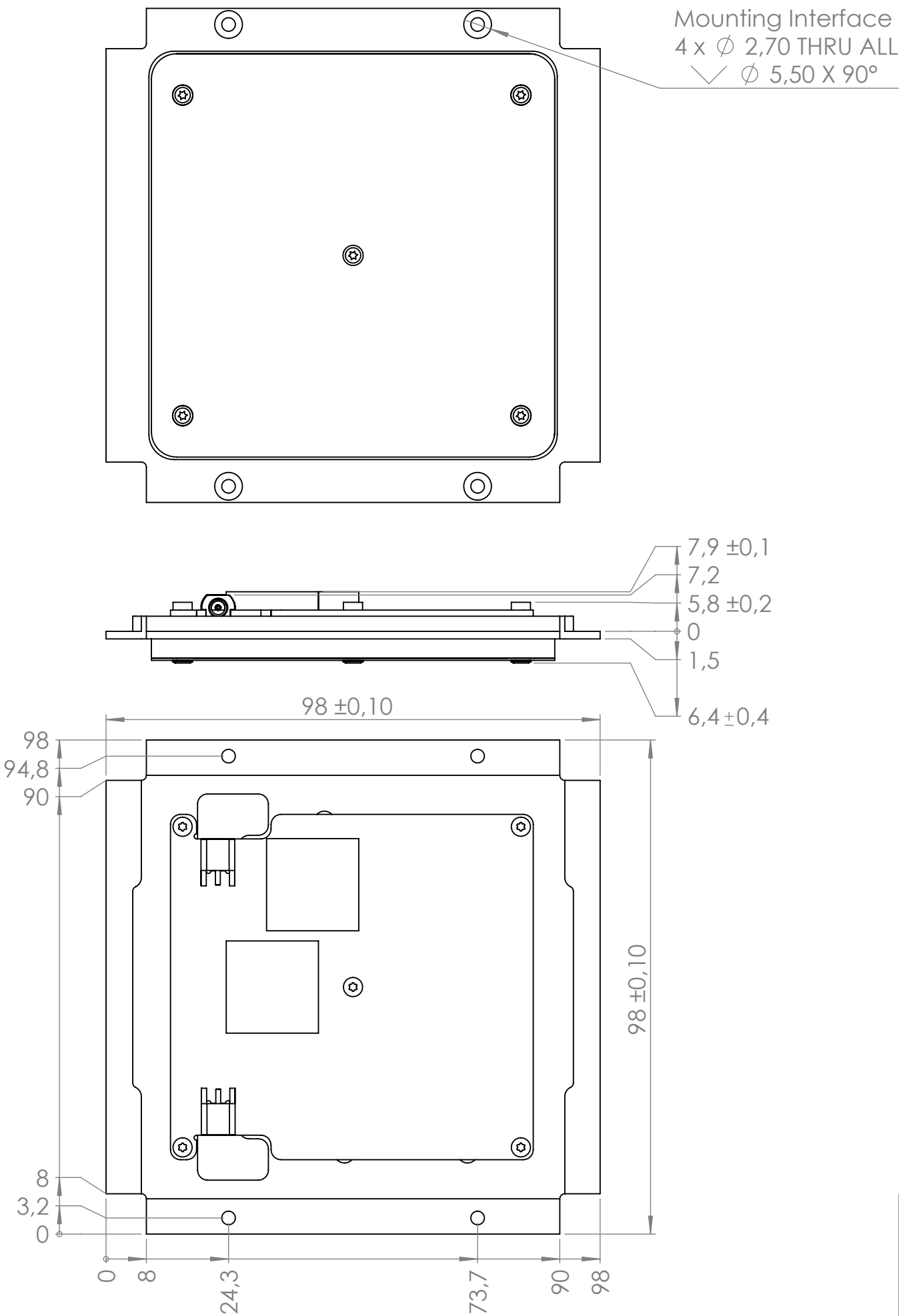


Mounting Interface
4 x (6) x \varnothing 2,40 THRU ALL
 \surd \varnothing 4,60 X 90°



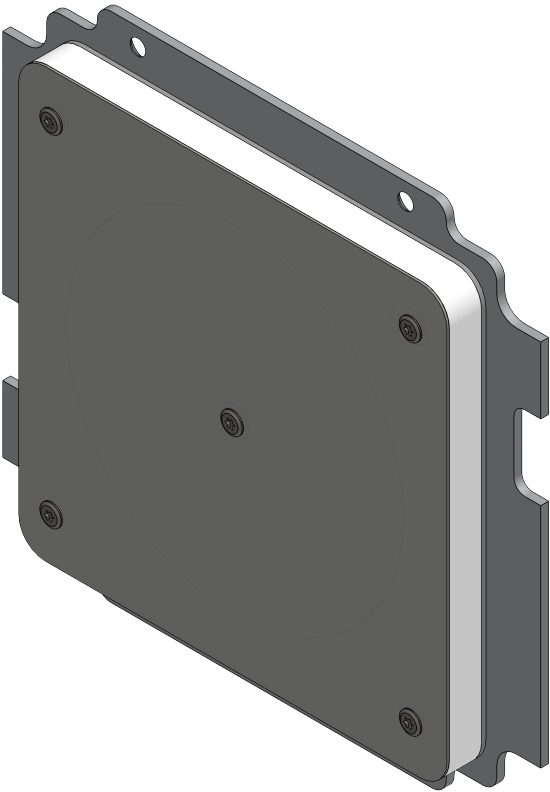
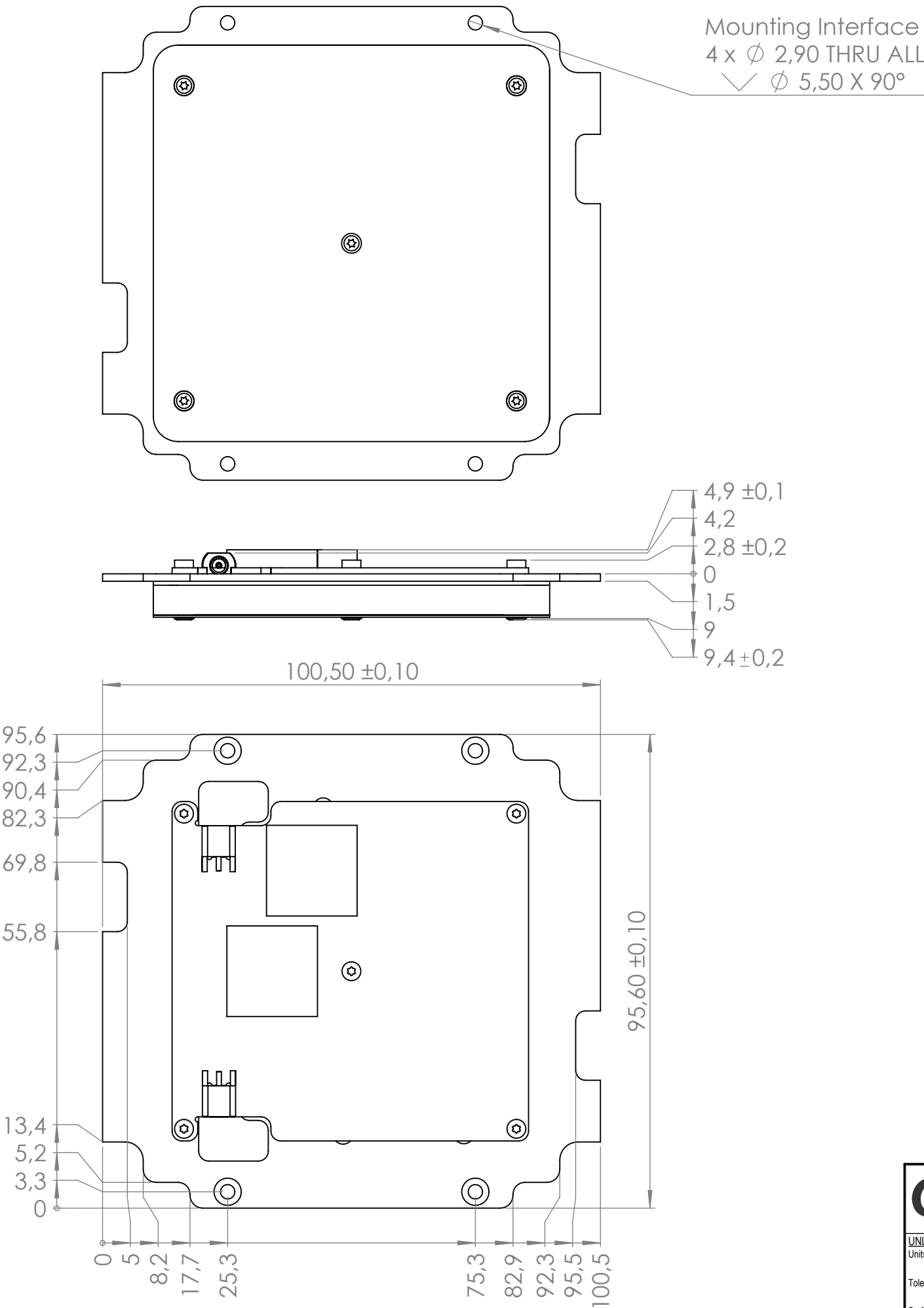
GOMSPACE <small>UNLESS OTHERWISE SPECIFIED: Units of dimensions: mm Tolerance: fine Surface roughness:</small>		Part Description: ANT2150 NanoCom AM2150-PS	QC by / date (dd-mm-yyyy): - / -	
		Material: N/A	Verified by / date (dd-mm-yyyy): KATU / 30/09/2025	
 Format A3 Scale 1:1		Surface treatment: N/A	Created by / date (dd-mm-yyyy): jfap / 05-12-2022	
		Notes: UNLESS OTHERWISE SPECIFIED: Screws should be tightened and secured according to IFS doc.: 1022205, Table 2-1	Document status: Released	
		Part Number 108482	Doc. Rev. 3.0	Sheet 2/4

AM2150PS Type C



<div><div><div>GOMSPACE</div><div>UNLESS OTHERWISE SPECIFIED:</div><div>Units of dimensions:</div><div>mm</div><div>Tolerance:</div><div>fine</div><div>Surface roughness:</div></div><div><div><div><div></div><div></div></div><div><div>Format</div><div>A3</div></div><div><div>Scale</div><div>1:1</div></div></div></div></div>		Part Description: ANT2150 NanoCom AM2150-PS	QC by / date (dd-mm-yyyy): - / -	
		Material: N/A	Verified by / date (dd-mm-yyyy): KATU / 30/09/2025	
		Surface treatment: N/A	Created by / date (dd-mm-yyyy): jfap / 05-12-2022	
		Notes: UNLESS OTHERWISE SPECIFIED: Screws should be tightened and secured according to IFS doc.: 1022205, Table 2-1	Document status: Released	
		Part Number 108482	Doc. Rev. 3.0	Sheet 3/4

AM2150PS Type D



GOMSPACE <small>UNLESS OTHERWISE SPECIFIED: Units of dimensions: mm Tolerance: fine Surface roughness:</small>		Part Description: ANT2150 NanoCom AM2150-PS	QC by / date (dd-mm-yyyy): - / -
		Material: N/A	Verified by / date (dd-mm-yyyy): KATU / 30/09/2025
 Format: A3 Scale: 1:1		Surface treatment: N/A	Created by / date (dd-mm-yyyy): jfap / 05-12-2022
		Notes: UNLESS OTHERWISE SPECIFIED: Screws should be tightened and secured according to IFS doc.: 1022205, Table 2-1	Document status: Released
		Part Number 108482	Doc. Rev. 3.0
		Sheet 4/4	