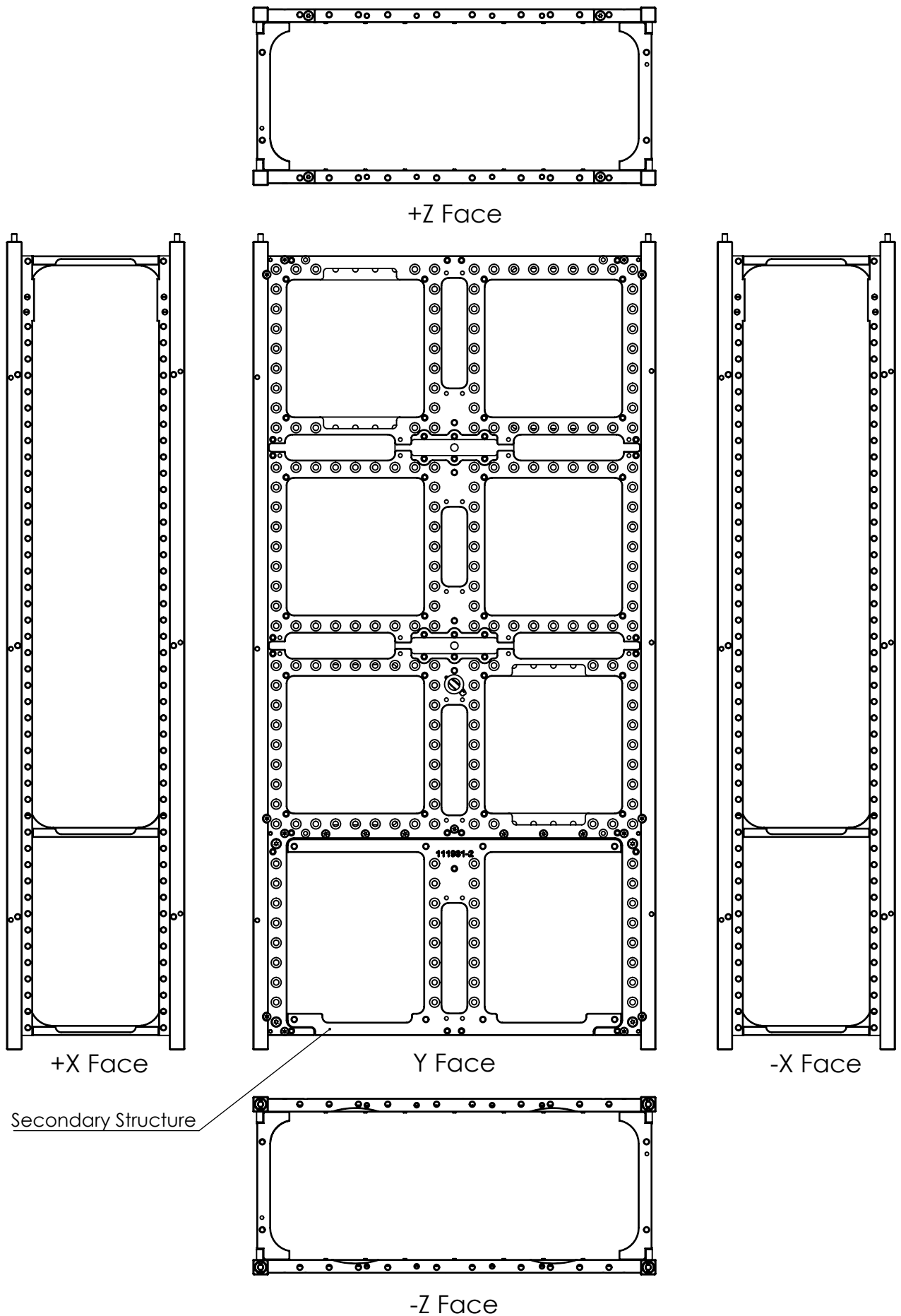


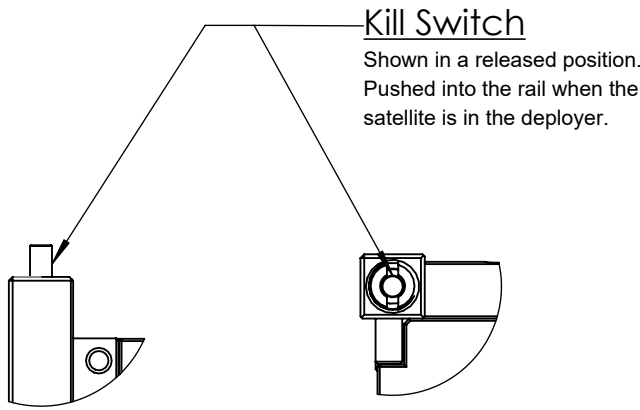


This drawing is the property of GOMSpace A/S, no reproduction or access to third party is allowed without written permission



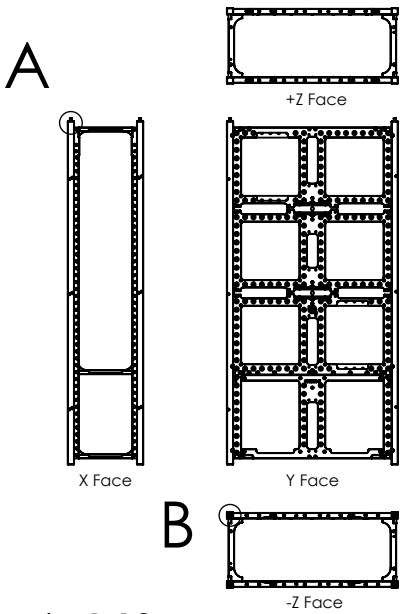
| | | | | | |
|--|--|---|--|---|--|
| <div></div> | | Part Description: NanoStructure 8U | | QC by / date (dd-mm-yyyy): N / A | |
| | | Material: N/A | | Verified by / date (dd-mm-yyyy): KATU / 19-03-2025 | |
| UNLESS OTHERWISE SPECIFIED: Units of dimensions: mm | | Surface treatment: N/A | | Created by / date (dd-mm-yyyy): fjvo / 19-03-2025 | |
| Tolerance: ISO 2768-fH | |  | | Document status: Released | |
| Surface roughness: N/A | | | | Part Number 111986 | |
| | | Format A4 | | Doc. Rev. 1.1 | |
| | | Scale 1:3 | | Sheet 1/7 | |

Z Face Overall Dimensions

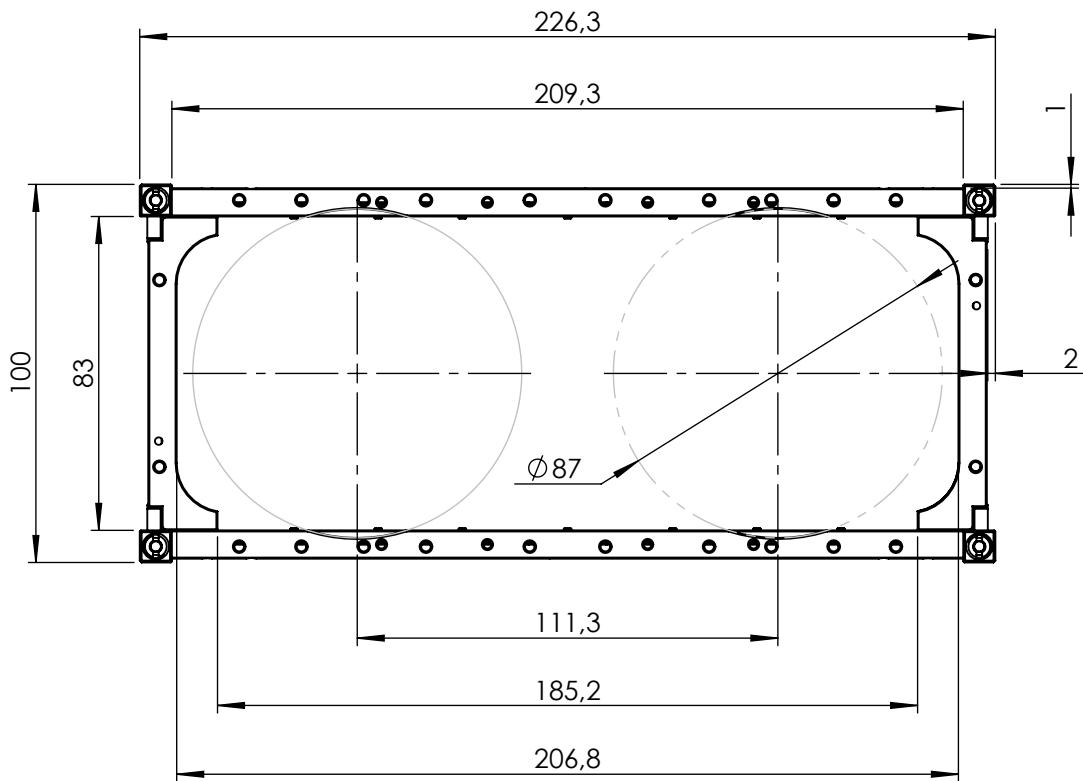


DETAIL A
SCALE 1 : 1

DETAIL B
SCALE 1 : 1



Scale 1:10



GOMSPACE

UNLESS OTHERWISE SPECIFIED:

Units of dimensions:

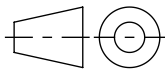
mm

Tolerance:

ISO 2768-fH

Surface roughness:

N/A



Format
A4

Scale
1:2

Part Description:

NanoStructure 8U

Material:

N/A

Surface treatment:

N/A

Notes:

UNLESS OTHERWISE SPECIFIED: Screws should be tightened and secured according to IFS doc.: 1022205, Table 2-1

QC by / date (dd-mm-yyyy):

N / A

Verified by / date (dd-mm-yyyy):

KATU / 19-03-2025

Created by / date (dd-mm-yyyy):

fjvo / 19-03-2025

Document status:

Released

Part Number

111986

Doc. Rev.

1.1

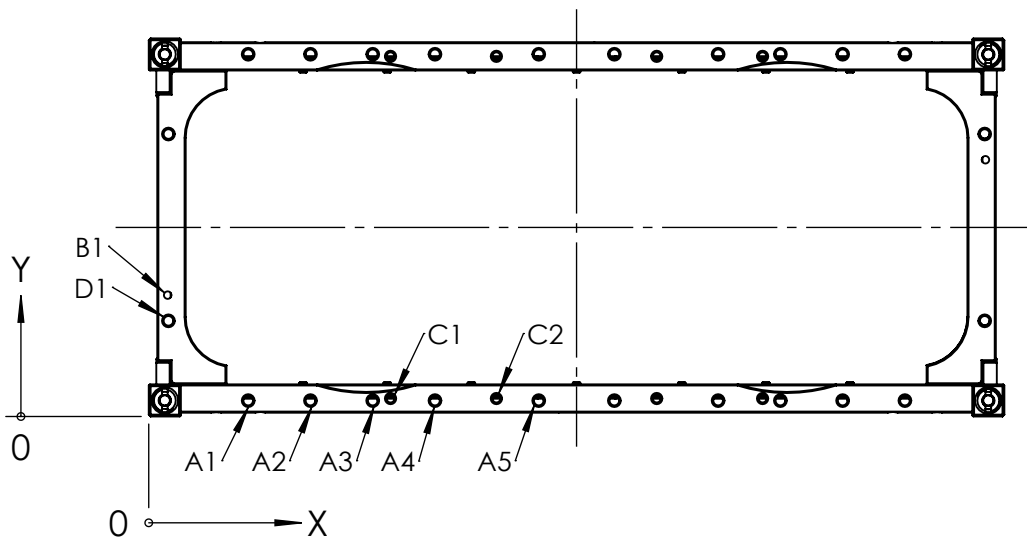
Sheet

2/7


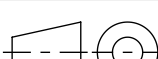
This drawing is the property of GomSpace A/S, no reproduction or access to third party is allowed without written permission

Z Face Hole Callouts

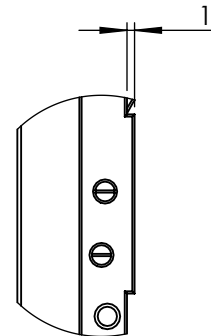
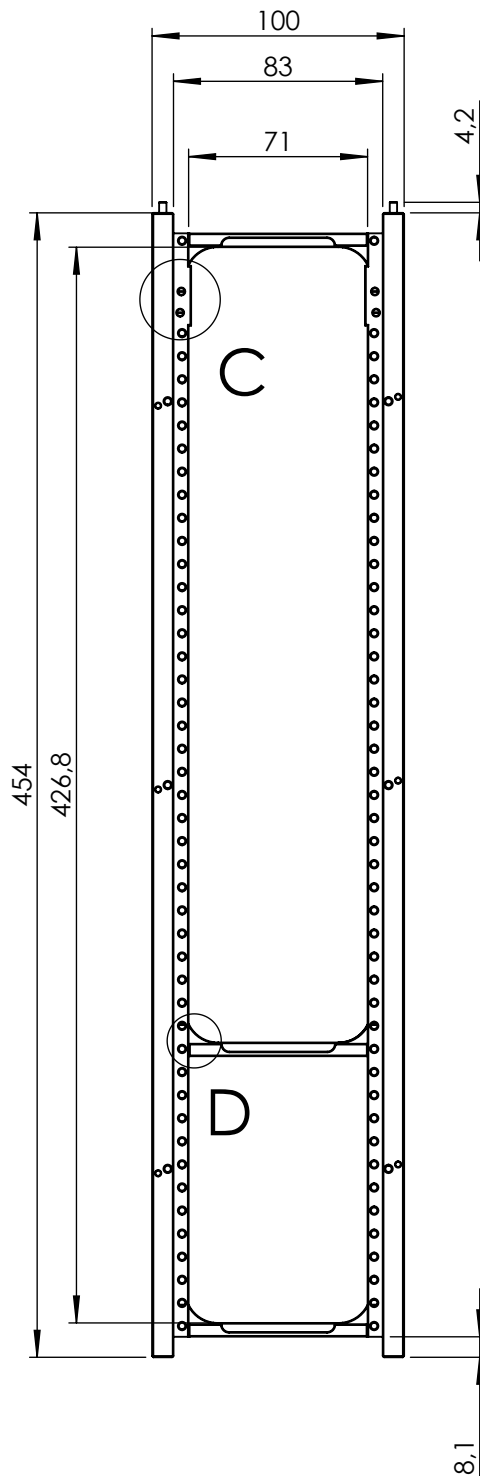
| TAG | X LOC | Y LOC | SIZE |
|-----|--------|-------|---|
| A1 | 26,30 | 4,20 | ϕ 2,55 ∇ 5,84 ∇ ϕ 3,4 X 120°, Near Side TAP FOR M2.5x0.45 SCREWLOCK HELICOIL Insert = 1.5 * Dia. |
| A2 | 42,77 | 4,20 | |
| A3 | 59,24 | 4,20 | |
| A4 | 75,70 | 4,20 | |
| A5 | 103,15 | 4,20 | |
| B1 | 5,01 | 32,10 | ϕ 2 ∇ 1,84 |
| C1 | 63,95 | 4,75 | ϕ 2,1 THRU ∇ ϕ 3 X 120°, Near Side TAP FOR M2x0.4 SCREWLOCK HELICOIL Insert = 2.0 * Dia. |
| C2 | 91,95 | 4,75 | |
| D1 | 5,21 | 25,30 | ϕ 2,55 ∇ 13,19 ∇ ϕ 3,4 X 120°, Near Side TAP FOR M2.5x0.45 SCREWLOCK HELICOIL Insert = 1.5 * Dia. |



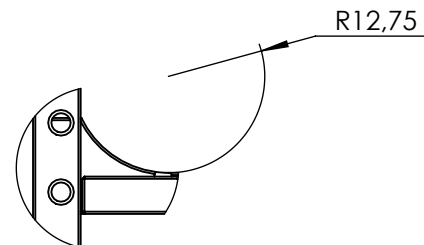
This drawing is the property of GOMSpace A/S, no reproduction or access to third party is allowed without written permission

| | | | | | | |
|--|--|--|--|---|------------------|--------------|
|  | | Part Description: NanoStructure 8U | | QC by / date (dd-mm-yyyy): N / A | | |
| | | Material: N/A | | Verified by / date (dd-mm-yyyy): KATU / 19-03-2025 | | |
| <u>UNLESS OTHERWISE SPECIFIED:</u> Units of dimensions: mm Tolerance: ISO 2768-fH Surface roughness: N/A | |  Surface treatment: N/A | | Created by / date (dd-mm-yyyy): fjvo / 19-03-2025 | | |
| | | Notes: UNLESS OTHERWISE SPECIFIED: Screws should be tightened and secured according to IFS doc.: 1022205, Table 2-1 | | Document status: Released | | |
| Format A4 | | Scale 1:2 | | Part Number 111986 | Doc. Rev. 1.1 | Sheet 3/7 |

X Face Overall Dimensions


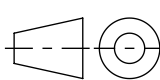


DETAIL C
SCALE 1 : 1

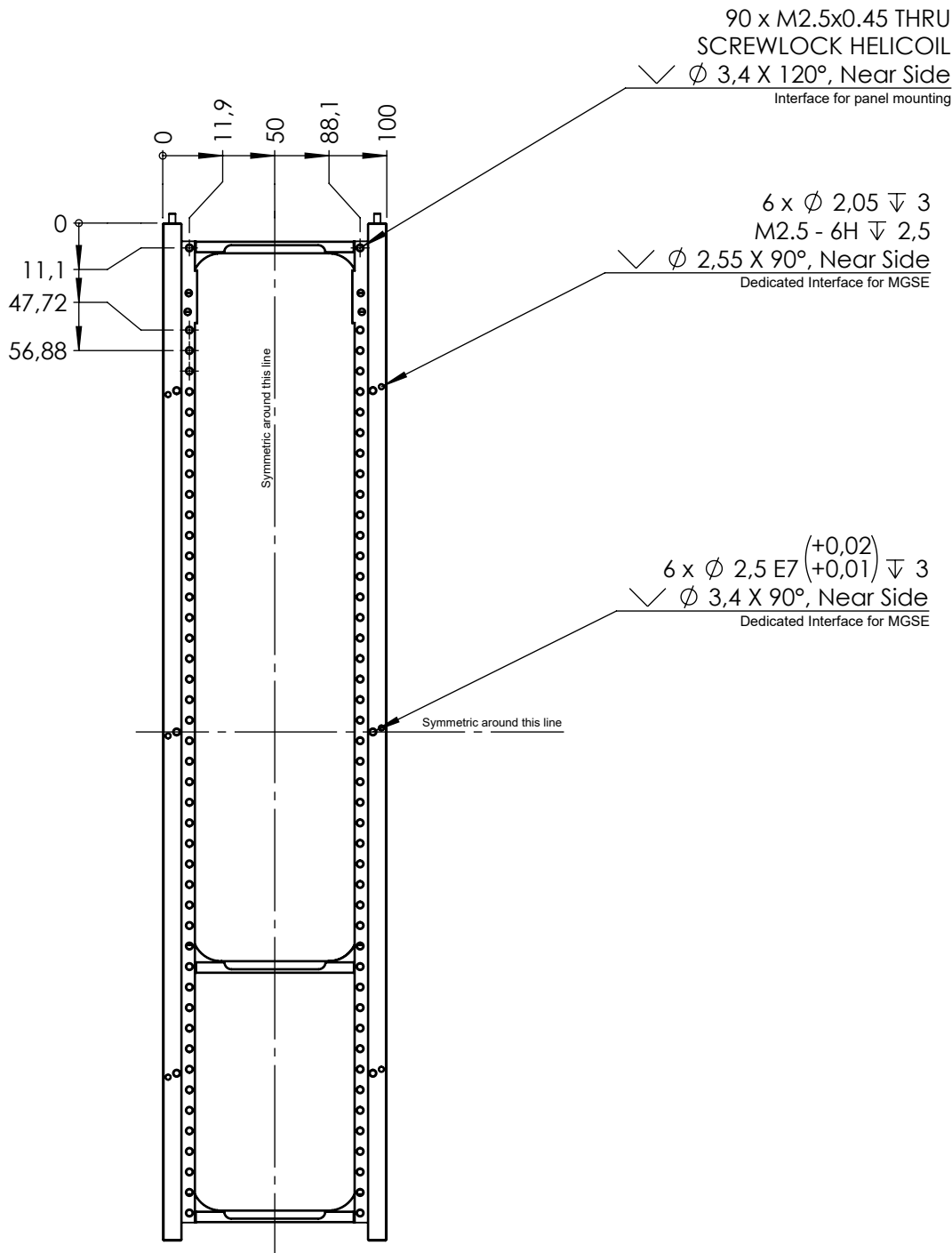


DETAIL D
SCALE 1 : 1


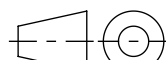
This drawing is the property of GOMSpace A/S, no reproduction or access to third party is allowed without written permission

| | | | | | |
|---|---------------------|---|--|-------------------------|---------------------|
|  | | Part Description: NanoStructure 8U | QC by / date (dd-mm-yyyy): N / A | | |
| | | Material: N/A | Verified by / date (dd-mm-yyyy): KATU / 19-03-2025 | | |
| <u>UNLESS OTHERWISE SPECIFIED:</u> Units of dimensions: mm Tolerance: ISO 2768-fH Surface roughness: N/A | | Surface treatment: N/A | Created by / date (dd-mm-yyyy): fjvo / 19-03-2025 | | |
|  | | Notes: UNLESS OTHERWISE SPECIFIED: Screws should be tightened and secured according to IFS doc.: 1022205, Table 2-1 | Document status: Released | | |
| Format A4 | Scale 1:3 | Part Number 111986 | | Doc. Rev. 1.1 | Sheet 4/7 |

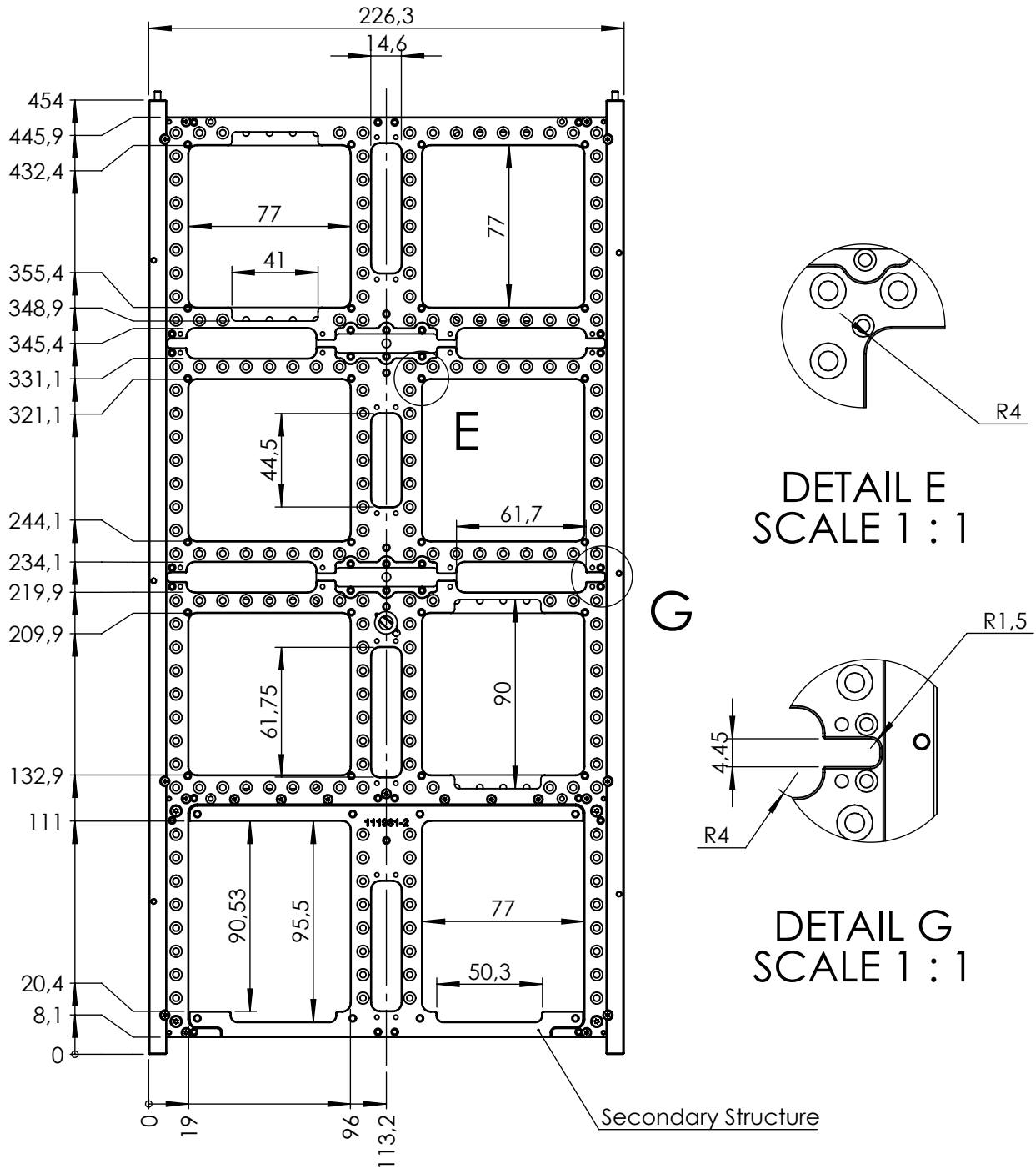
X Face Hole Callouts



This drawing is the property of GOMSpace A/S, no reproduction or access to third party is allowed without written permission

| | | | | | |
|---|--|---|--|---|------------------|
|  | | Part Description: NanoStructure 8U | | QC by / date (dd-mm-yyyy): N / A | |
| <div>UNLESS OTHERWISE SPECIFIED:</div> <div>Units of dimensions: mm</div> <div>Tolerance: ISO 2768-fH</div> <div>Surface roughness: N/A</div> | | Material: N/A | | Verified by / date (dd-mm-yyyy): KATU / 19-03-2025 | |
| | | Surface treatment: N/A | | Created by / date (dd-mm-yyyy): fjvo / 19-03-2025 | |
| <div></div> <div>Format A4</div> <div>Scale 1:3</div> | | <div>Notes:</div> <div>UNLESS OTHERWISE SPECIFIED: Screws should be tightened and secured according to IFS doc.: 1022205, Table 2-1</div> | | Document status: Released | |
| | | | | Part Number 111986 | Doc. Rev. 1.1 |

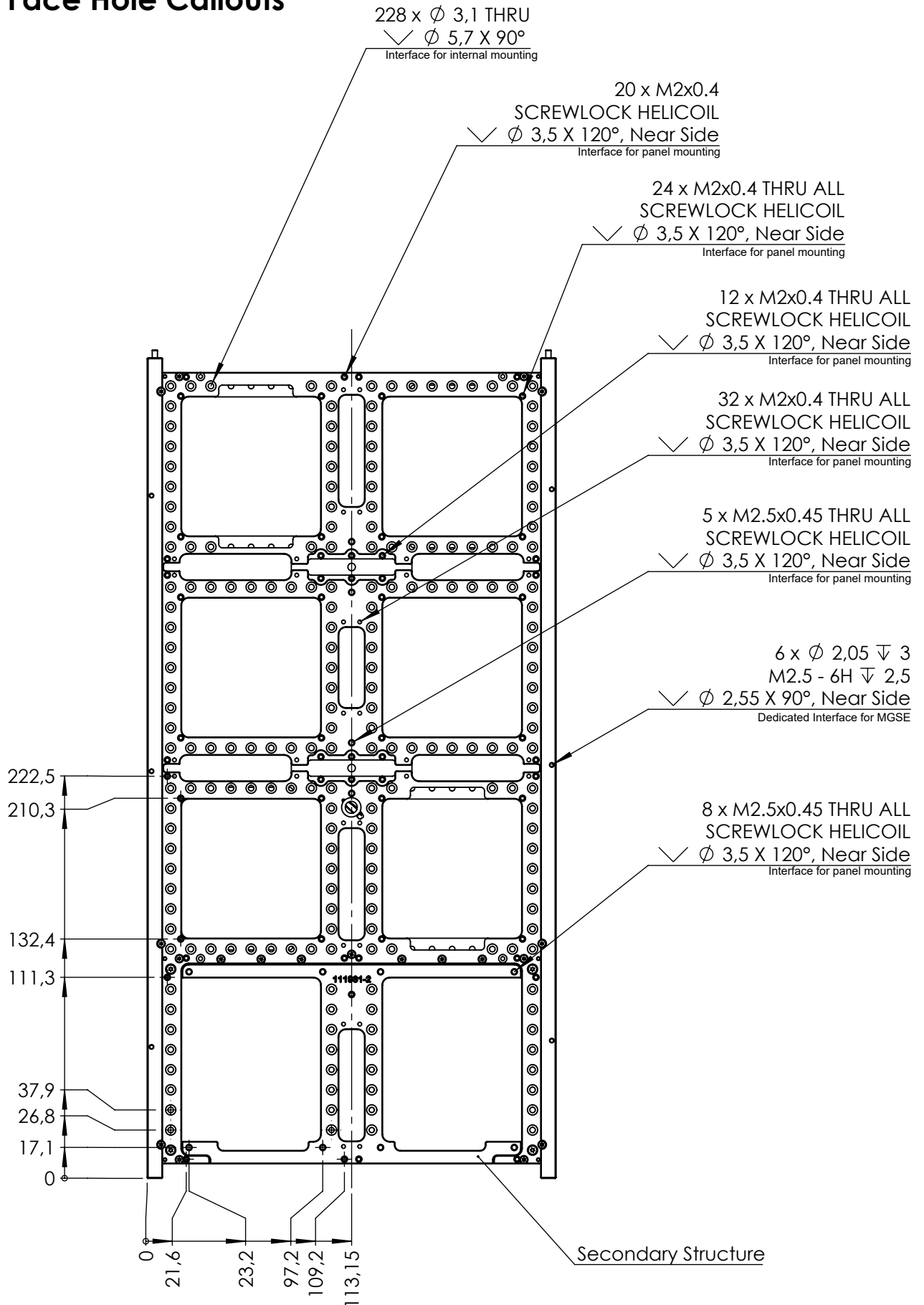
Y Face Overall Dimensions



This drawing is the property of GOMSpace A/S, no reproduction or access to third party is allowed without written permission

| | | | | | |
|-----------------------------|--|--|--|---|--|
| | | Part Description: NanoStructure 8U | | QC by / date (dd-mm-yyyy): N / A | |
| | | Material: N/A | | Verified by / date (dd-mm-yyyy): KATU / 19-03-2025 | |
| UNLESS OTHERWISE SPECIFIED: | | Surface treatment: N/A | | Created by / date (dd-mm-yyyy): fjvo / 19-03-2025 | |
| Units of dimensions: mm | | | | Document status: Released | |
| Tolerance: ISO 2768-fH | | | | | |
| Surface roughness: N/A | | Notes: UNLESS OTHERWISE SPECIFIED: Screws should be tightened and secured according to IFS doc.: 1022205, Table 2-1 | | Part Number 111986 | |
| | | Format A4 | | Doc. Rev. 1.1 | |
| | | Scale 1:3 | | Sheet 6/7 | |

Y Face Hole Callouts



GOMSPACE

UNLESS OTHERWISE SPECIFIED:

Units of dimensions:

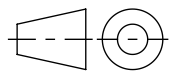
mm

Tolerance:

ISO 2768-fH

Surface roughness:

N/A



Format

A4

Scale

1:3

Part Description:

NanoStructure 8U

Material:

N/A

Surface treatment:

N/A

Notes:

UNLESS OTHERWISE SPECIFIED: Screws should be tightened and secured according to IFS doc.: 1022205, Table 2-1

QC by / date (dd-mm-yyyy):

N / A

Verified by / date (dd-mm-yyyy):

KATU / 19-03-2025

Created by / date (dd-mm-yyyy):

fjvo / 19-03-2025

Document status:

Released

Part Number

111986

Doc. Rev.

1.1

Sheet

7/7

This drawing is the property of GOMSpace A/S, no reproduction or access to third party is allowed without written permission